

APP CRS	Rwy Idg	N/A
<b>346°</b>	TDZE	N/A
	Apt Elev	<b>5055</b>

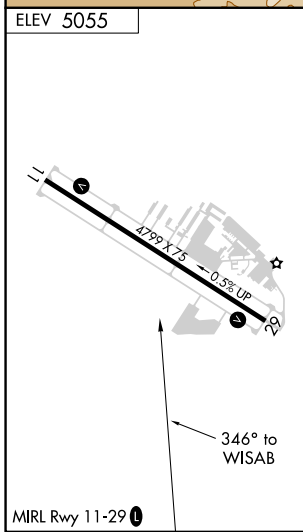
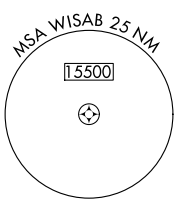
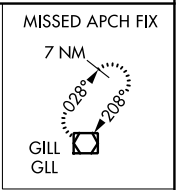
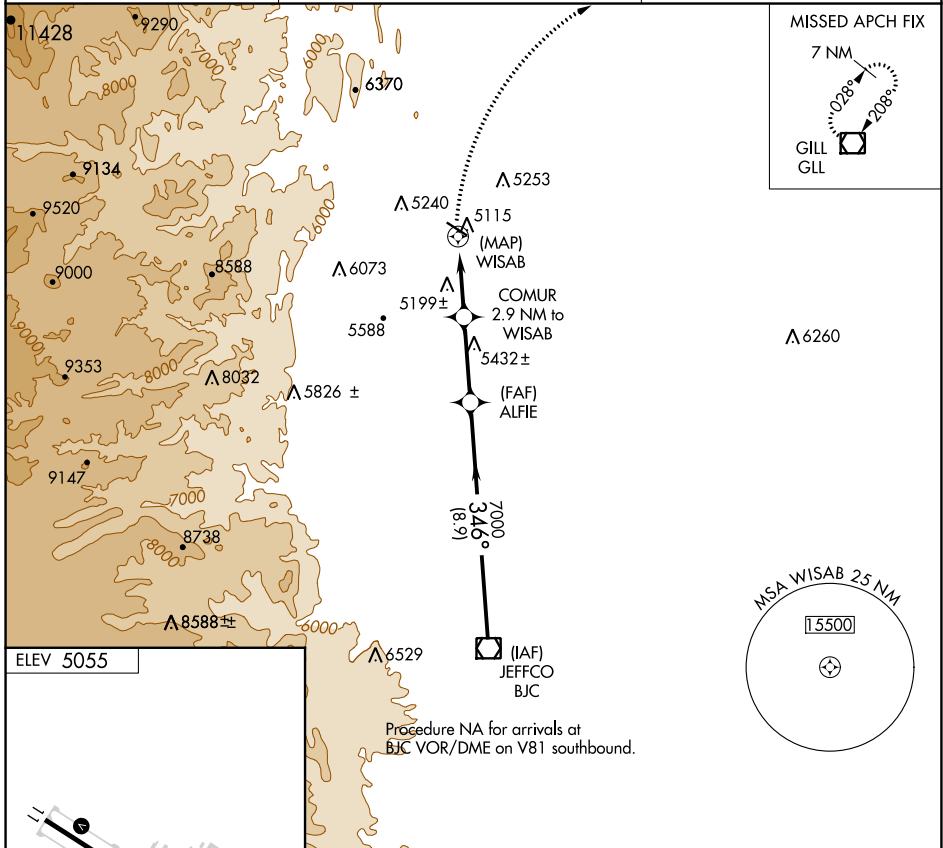
# RNAV (GPS)-B

VANCE BRAND (LMO)

**⚠** When local altimeter setting not received, use Denver Intl altimeter setting and increase all MDA 120 feet; and increase Cat C/D visibility ¼ mile.  
**⚠** DME/DME RNP-0.3 NA. Visibility reduction by helicopters NA.

MISSED APPROACH: Climbing right turn to 7200 direct GLL VOR/DME and hold.

AWOS-3 <b>120.0</b>	DENVER APP CON <b>125.12 263.02</b>	UNICOM <b>122.975</b> (CTAF) <b>📻</b>
------------------------	--	--



7200	GLL <b>📻</b>	COMUR 2.9 NM to WISAB	ALFIE	BJC VOR/DME
			7000	9200
		2.9 NM	3.1 NM	8.9 NM
CATEGORY	A	B	C	D
CIRCLING	5560-1 505 (600-1)	5580-1 525 (600-1)	5880-2½ 825 (900-2½)	6500-3 1445 (1500-3)

SW-1, 31 OCT 2024 to 28 NOV 2024

SW-1, 31 OCT 2024 to 28 NOV 2024