

| | | |
|--|------------------------|--|
| WAAS CH 69608 W36A | APP CRS 359° | Rwy Idg 6500 TDZE -2 Apt Elev 0 |
|--|------------------------|--|

RNAV (GPS) RWY 36

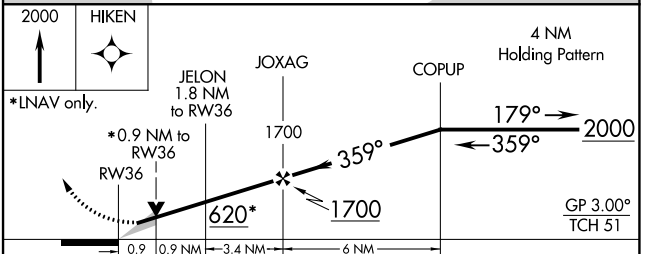
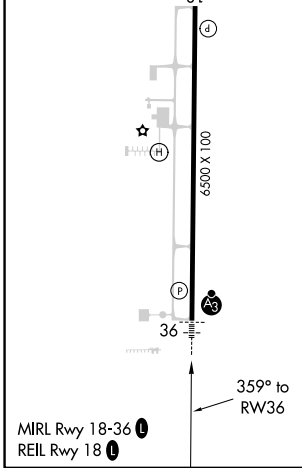
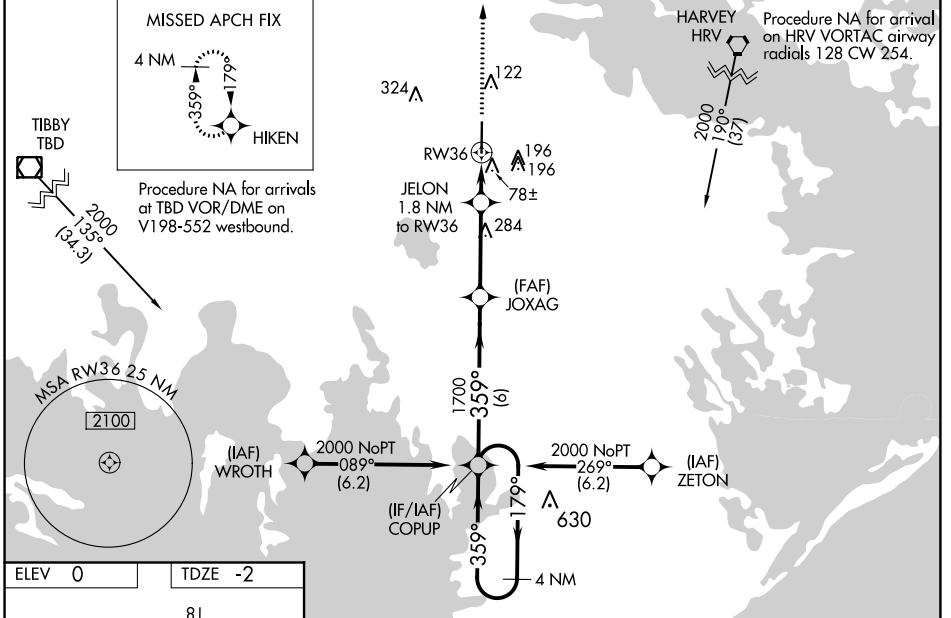
SOUTH LAFOURCHE LEONARD MILLER JR (G.A.O)

RNP APCH.

⚠ For uncompensated Baro-VNAV systems, LNAV/VNAV NA below -15°C or above 54°C. For inop ALS, increase LNAV/VNAV all Cats visibility to ¾ SM and LNAV Cat C and D visibility to 1 SM. When local altimeter setting not received, use Louis Armstrong New Orleans Intl altimeter setting and increase LPV DA to 275 feet, LNAV/VNAV DA to 325 feet and all MDA 80 feet and increase LNAV/VNAV all Cats visibility ½ SM, LNAV Cat C and D visibility ½ SM and Circling Cat C and D visibility ½ SM. For inop ALS, when using Louis Armstrong New Orleans Intl altimeter setting, increase LPV and LNAV/VNAV all Cats visibility ¾ SM. Baro-VNAV and VDP NA when using Louis Armstrong New Orleans Intl altimeter setting.

SSALR MISSED APPROACH: Climb to 2000 direct HIKEN and hold.

| | | | |
|----------------------------|--|---------------------------|---------------------------------|
| AWOS-3PT 118.175 | NEW ORLEANS APP CON 120.85 256.9 | CLNC DEL 120.85 | UNICOM 123.0 (CTAF) 0 |
|----------------------------|--|---------------------------|---------------------------------|



| CATEGORY | A | B | C | D |
|--|----------------------|----------------------|------------------------|----------------------|
| LPV DA | 198-½ 200 (200-½) | | | |
| LNAV/VNAV DA | 248-½ 250 (300-½) | | | |
| LNAV MDA | 340-½ | 342 (400-½) | 340-⅝ | 342 (400-⅝) |
| <input checked="" type="checkbox"/> CIRCLING | 440-1 440 (500-1) | 560-1 560 (600-1) | 640-1¾ 640 (700-1¾) | 640-2 640 (700-2) |

SC-4, 31 OCT 2024 to 28 NOV 2024

SC-4, 31 OCT 2024 to 28 NOV 2024