

APP CRS 160°	Rwy Idg 6003
	TDZE 2377
	Apt Elev 2377

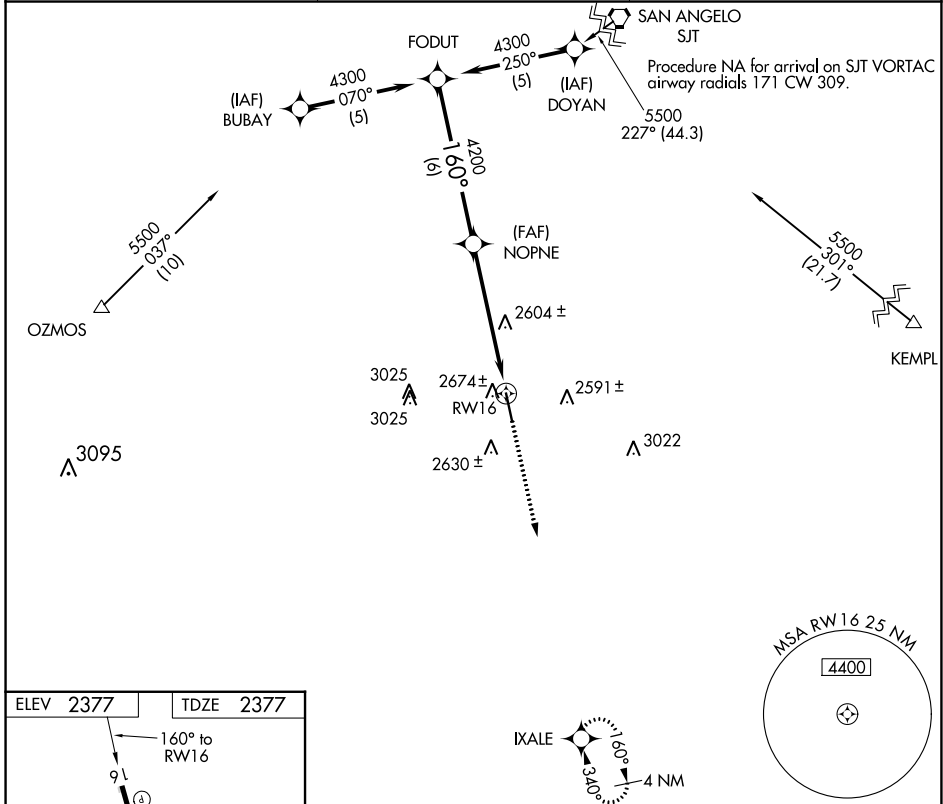
RNAV (GPS) RWY 16

OZONA MUNI (OZA)

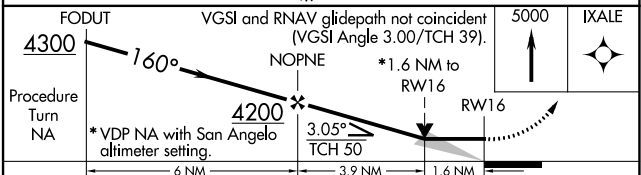
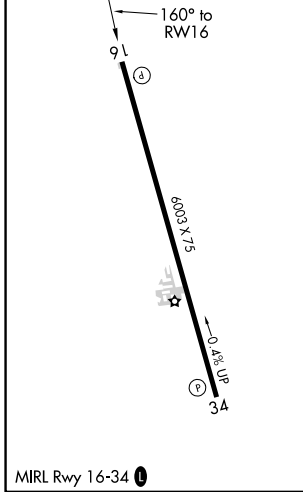
⚠ GPS or RNP-0.3 required. DME/DME RNP-0.3 NA. Procedure NA at night.
⚠ NA Obtain local altimeter on CTAF; when not received, use San Angelo altimeter setting.
 Rwy 16 helicopter visibility reduction below ¼ SM NA.

MISSED APPROACH: Climb to 5000 direct IXALE WP and hold.

AWOS-3PT 118.425	HOUSTON CENTER 125.75 346.4	UNICOM 122.8 (CTAF) 0
----------------------------	---------------------------------------	---------------------------------



ELEV 2377	TDZE 2377
------------------	------------------



CATEGORY	A	B	C	D
LNAV MDA	2940-1¼	563 (600-1¼)	2940-1½ 563 (600-1½)	NA
CIRCLING	2980-1¼	603 (700-1¼)	2980-1¾ 603 (700-1¾)	NA
SAN ANGELO ALTIMETER SETTING MINIMUMS				
LNAV MDA	3180-1¼	803 (800-1¼)	3180-2¼ 803 (800-2¼)	NA
CIRCLING	3220-1¼	843 (900-1¼)	3220-2½ 843 (900-2½)	NA

SC-3, 31 OCT 2024 to 28 NOV 2024

SC-3, 31 OCT 2024 to 28 NOV 2024