

| | | |
|------------------------|-----------------------------|---|
| APP CRS 173° | Rwy Idg TDZE Apt Elev | 4300 1344 1344 |
|------------------------|-----------------------------|---|

RNAV (GPS) RWY 17

SEYMOUR MUNI (60F)

RNP APCH - GPS.

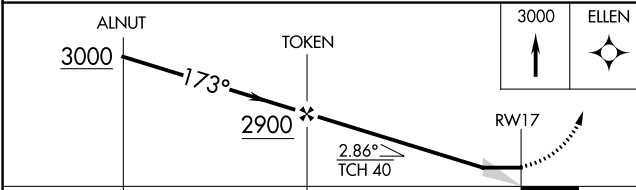
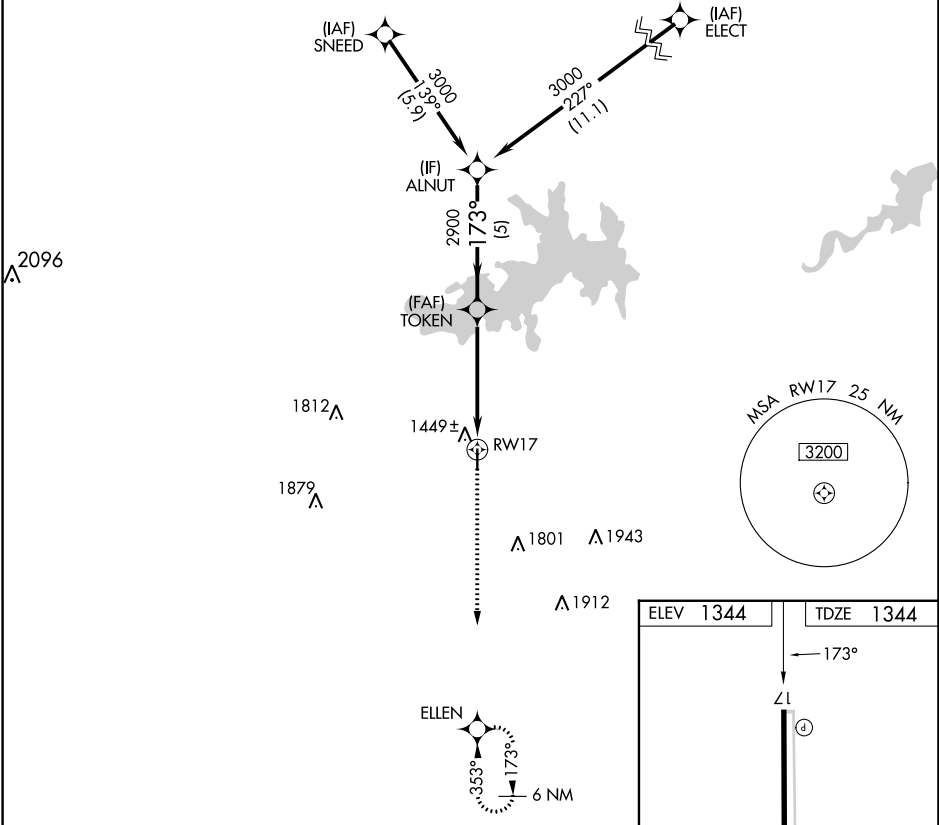
▼ Obtain local altimeter on CTAF; when not received, use Sheppard AFB/Wichita Falls Muni altimeter setting and increase all MDAs 160 feet, increase LNAV Cat C and Circling Cat C visibility ½ SM. Procedure NA at night. Rwy 17 helicopter visibility reduction below 1 SM NA.

▲ NA

MISSED APPROACH: Climb to 3000 direct ELLEN and hold.

FORT WORTH CENTER
133.5 350.35

CTAF
122.9



| | |
|-----------|-----------|
| ELEV 1344 | TDZE 1344 |
| 173° | |
| ZL | |
| 4300 X 60 | |
| 35 | |

MIRL Rwy 17-35

| | | | | |
|----------|-----------------------|-----------------------|-----------------------|----|
| CATEGORY | A | B | C | D |
| LNAV MDA | 1700-1 | | 356 (400-1) | |
| CIRCLING | 1780-1 436 (500-1) | 1800-1 456 (500-1) | 2020-2 676 (700-2) | NA |

SC-2, 31 OCT 2024 to 28 NOV 2024

SC-2, 31 OCT 2024 to 28 NOV 2024