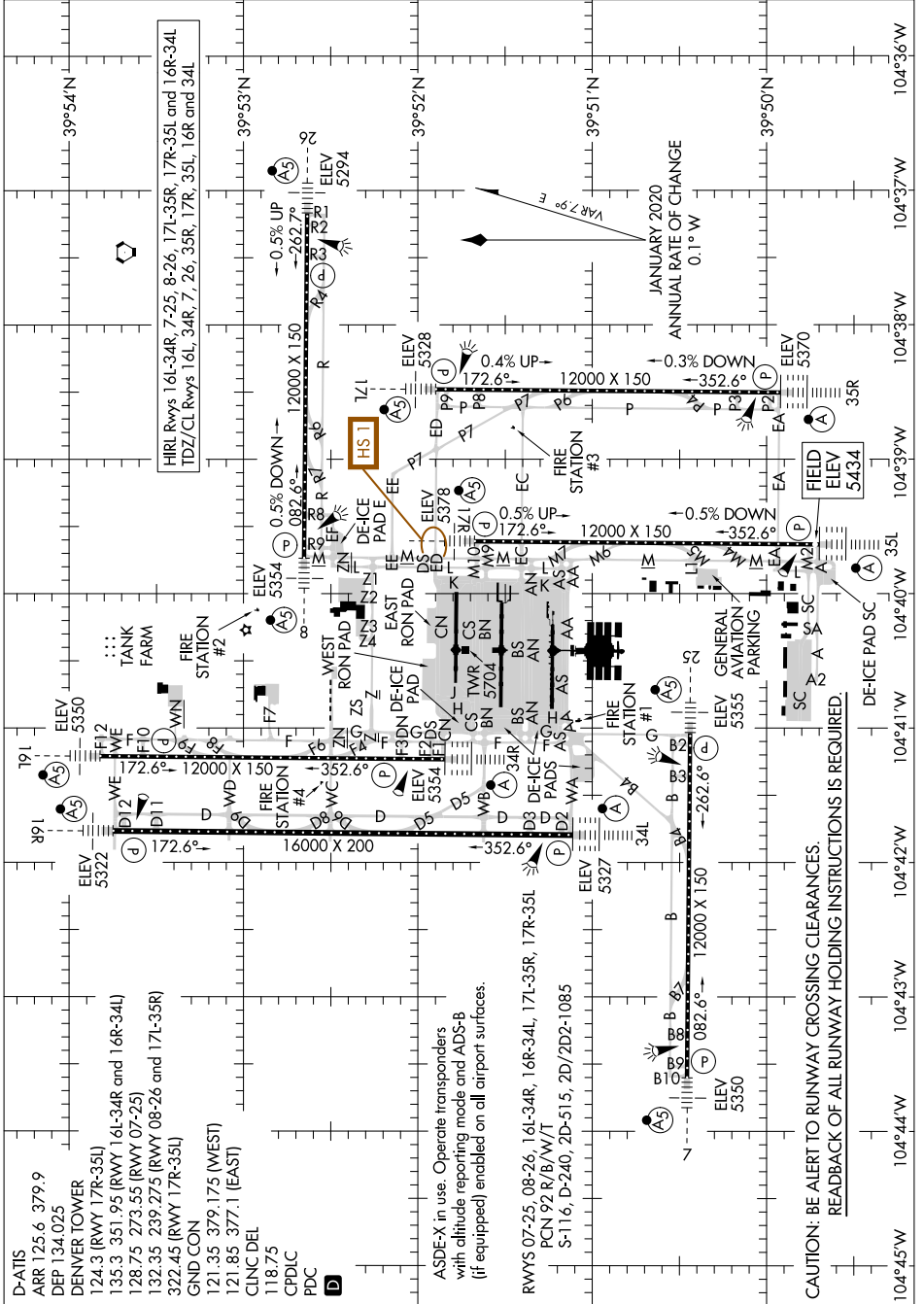


# AIRPORT DIAGRAM

AL-9077 (FAA)

DENVER INTL (D/E/N)  
DENVER, COLORADO

SW-1, 31 OCT 2024 to 28 NOV 2024



# AIRPORT DIAGRAM

DENVER, COLORADO  
DENVER INTL (D/E/N)

SW-1, 31 OCT 2024 to 28 NOV 2024

D-ATIS  
ARR 125.6 379.9  
DEP 134.025  
DENVER TOWER  
124.3 (RWY 17R-35L)  
135.3 351.95 (RWY 16L-34R and 16R-34L)  
128.75 273.55 (RWY 07-25)  
132.35 239.275 (RWY 08-26 and 17L-35R)  
322.45 (RWY 17R-35L)  
GND CON  
121.35 379.175 (WEST)  
121.85 377.1 (EAST)  
CINC DEL  
118.75  
CPDIC  
PDC

ASDE-X in use. Operate transponders with altitude reporting mode and ADS-B (if equipped) enabled on all airport surfaces.

RWYs 07-25, 08-26, 16L-34R, 16R-34L, 17L-35R, 17R-35L  
PCN 92R/B/W/T  
S-116, D-240, 2D-515, 2D/2D2-1085

CAUTION: BE ALERT TO RUNWAY CROSSING CLEARANCES.  
READBACK OF ALL RUNWAY HOLDING INSTRUCTIONS IS REQUIRED.