

FLATI FOUR ARRIVAL (RNAV) Transition Routes

DENVER, COLORADO

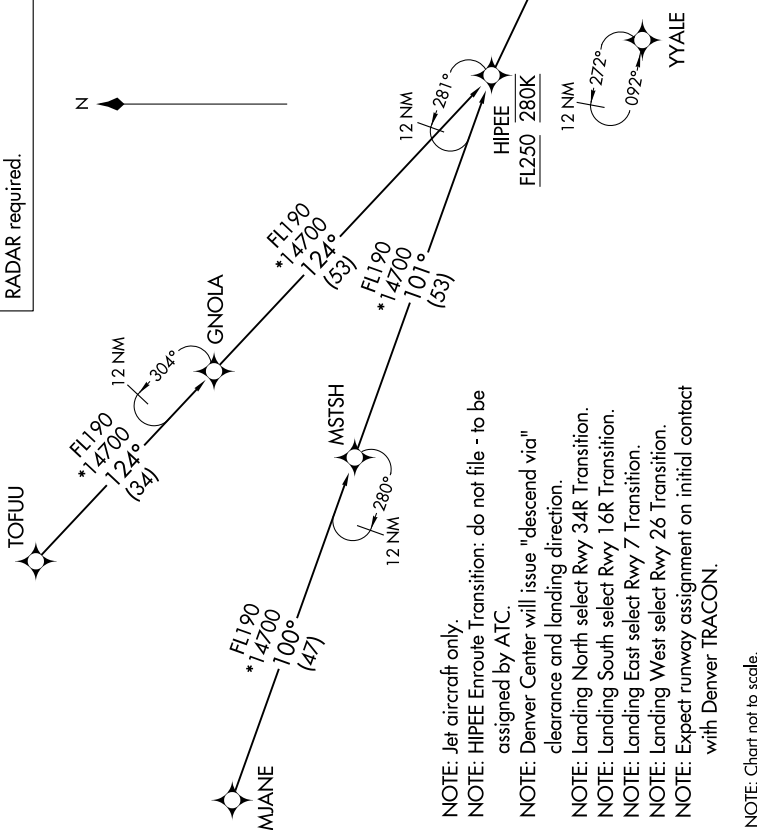
DENVER APP CON
 119.3 307.3
 D-ATIS ARR
 125.6 379.9
 DENVER TOWER
 128.75 273.55 (Rwy 7-25)
 132.35 239.275 (Rwys 8-26, 17L-35R)
 124.3 322.45 (Rwy 17R-35L)
 135.3 351.95 (Rwys 16L-34R, 16R-34L)

See following page
 for Arrival Routes

FLATI
 FL220 270K
 FL190

SW-1, 31 OCT 2024 to 28 NOV 2024

RNAV 1 - DME/DME/IRU or GPS.
 RADAR required.



- NOTE: Jet aircraft only.
 NOTE: HIPEE Enroute Transition: do not file - to be assigned by ATC.
 NOTE: Denver Center will issue "descend via" clearance and landing direction.
 NOTE: Landing North select Rwy 34R Transition.
 NOTE: Landing South select Rwy 16R Transition.
 NOTE: Landing East select Rwy 7 Transition.
 NOTE: Landing West select Rwy 26 Transition.
 NOTE: Expect runway assignment on initial contact with Denver TRACON.

NOTE: Chart not to scale.

HIPEE TRANSITION (HIPEE.FLATI4)
 MJANE TRANSITION (MJANE.FLATI4)
 TOFUU TRANSITION (TOFUU.FLATI4)

(CONTINUED ON FOLLOWING PAGE)

SW-1, 31 OCT 2024 to 28 NOV 2024

FLATI FOUR ARRIVAL (RNAV) Transition Routes