

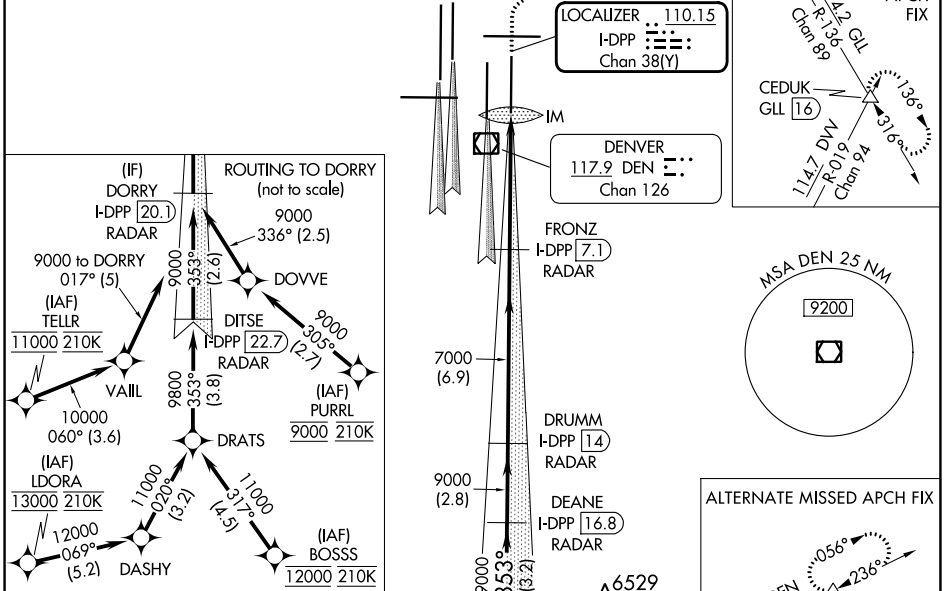
LOC/DME I-DPP <b>110.15</b> Chan <b>38(Y)</b>	APP CRS <b>353°</b>	Rwy ldg <b>12000</b> TDZE <b>5370</b> Apt Elev <b>5434</b>
---	------------------------	--

# ILS RWY 35R (CAT II & III)

DENVER INTL (DEN)

<p>Simultaneous approach authorized with Rwy 34L, Rwy 34R, and Rwy 35L. CAT II: RVR 1000 authorized with specific OPSPEC, MSPEC, or LOA approval and use of autoland or HUD to touchdown.</p>	<p>ALSf-2</p>	<p>MISSED APPROACH: Climb to 5800 then climbing right turn to 10000 on heading 048° and on GLL VORTAC R-136 to CEDUK/GLL 16 DME and hold.</p>			
<p>D-ATIS <b>125.6 379.9 (ARR)</b> <b>134.025 (DEP)</b></p>	<p>DENVER APP CON <b>119.3 307.3 (N)</b> <b>120.35 379.3 (S)</b></p>	<p>DENVER TOWER <b>132.35 239.275</b></p>	<p>GND CON <b>121.35 379.175 (W)</b> <b>121.85 377.1 (E)</b></p>	<p>CLNC DEL <b>118.75</b></p>	<p>CPDLC</p>

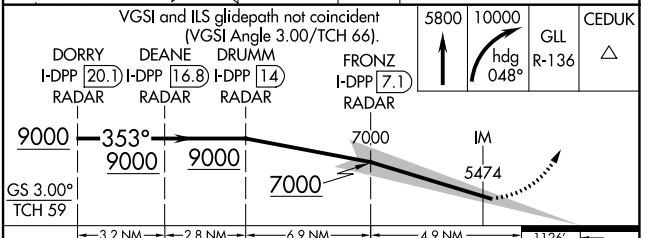
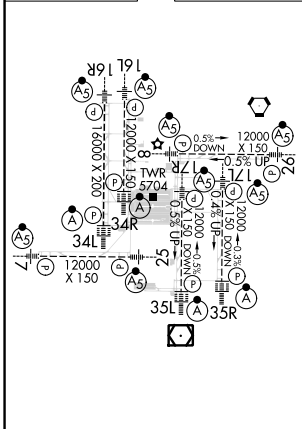
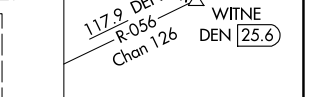
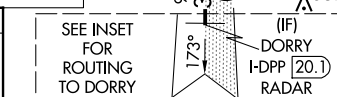
## RADAR or GPS REQUIRED



SW-1, 31 OCT 2024 to 28 NOV 2024

SW-1, 31 OCT 2024 to 28 NOV 2024

ELEV 5434	<b>D</b>	TDZE 5370
-----------	----------	-----------



5800	10000	GLL	CEDUK
↑	hdg	R-136	△
	048°		
9000	353°	9000	7000
GS 3.00°			
TCH 59			
	3.2 NM	2.8 NM	6.9 NM
			4.9 NM
			1.126'
CATEGORY	A	B	C
S-ILS 35R	CAT II RA 111/12 100 DA 5470		
S-ILS 35R	CAT IIIa RVR 07		
S-ILS 35R	CAT IIIb RVR 03		
S-ILS 35R	CAT IIIc NA		

## CATEGORY II & III ILS - SPECIAL AIRCREW & AIRCRAFT CERTIFICATION REQUIRED