

LOC/DME I-AQD <b>108.5</b> Chan <b>22</b>	APP CRS <b>353°</b>	Rwy Idg <b>12000</b> TDZE <b>5434</b> Apt Elev <b>5434</b>
---	------------------------	--

# ILS or LOC RWY 35L

DENVER INTL (DEN)

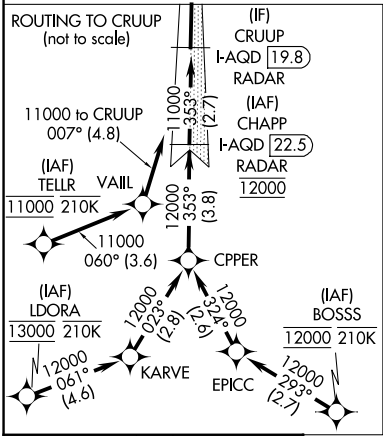
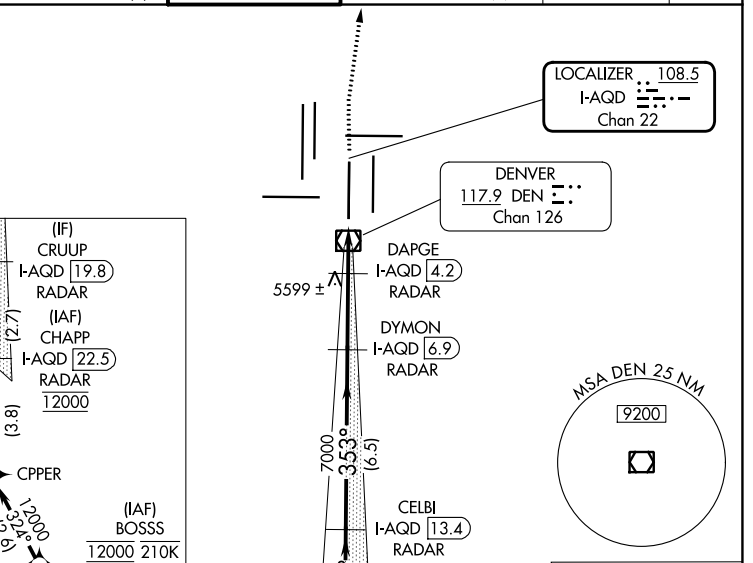
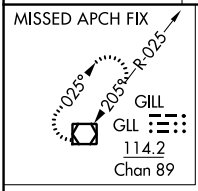
DME or RADAR required for LOC only.  
RNAV 1-GPS or RADAR required for procedure entry.

**Simultaneous approach authorized.**

ALSF-2

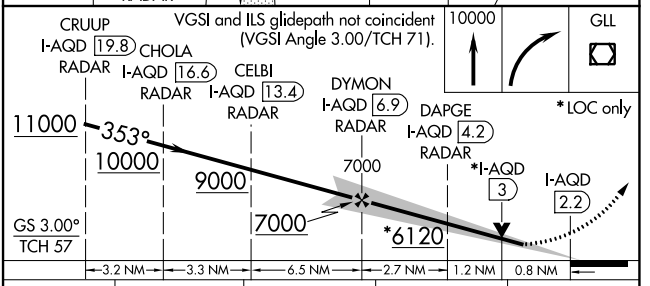
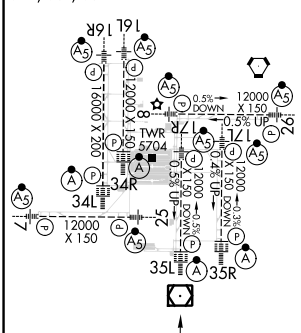
MISSED APPROACH: Climb to 10000 then right turn direct GLL VOR/DME and hold.

D-ATIS <b>125.6 379.9 (ARR)</b> <b>134.025 (DEP)</b>	DENVER APP CON <b>119.3 307.3 (N)</b> <b>120.35 379.3 (S)</b>	DENVER TOWER <b>124.3 322.45</b>	GND CON <b>121.35 379.175 (W)</b> <b>121.85 377.1 (E)</b>	CLNC DEL <b>118.75</b>	CPDLC
--	---	-------------------------------------	---	---------------------------	-------



ELEV 5434	<b>D</b>	TDZE 5434
-----------	----------	-----------

HIRL all Rwys  
TDZ/CL Rwy 7, 16L, 16R, 17R, 26, 34L, 34R, 35L, 35R



CATEGORY	A	B	C	D
S-ILS 35L	5634/18 200 (200-½)			
S-LOC 35L	5760/24	326 (400-½)		5760/26 326 (400-½)

SW-1, 31 OCT 2024 to 28 NOV 2024

SW-1, 31 OCT 2024 to 28 NOV 2024