


APP CRS 173°	Rwy Idg 12000
	TDZE 5357
	Apt Elev 5434

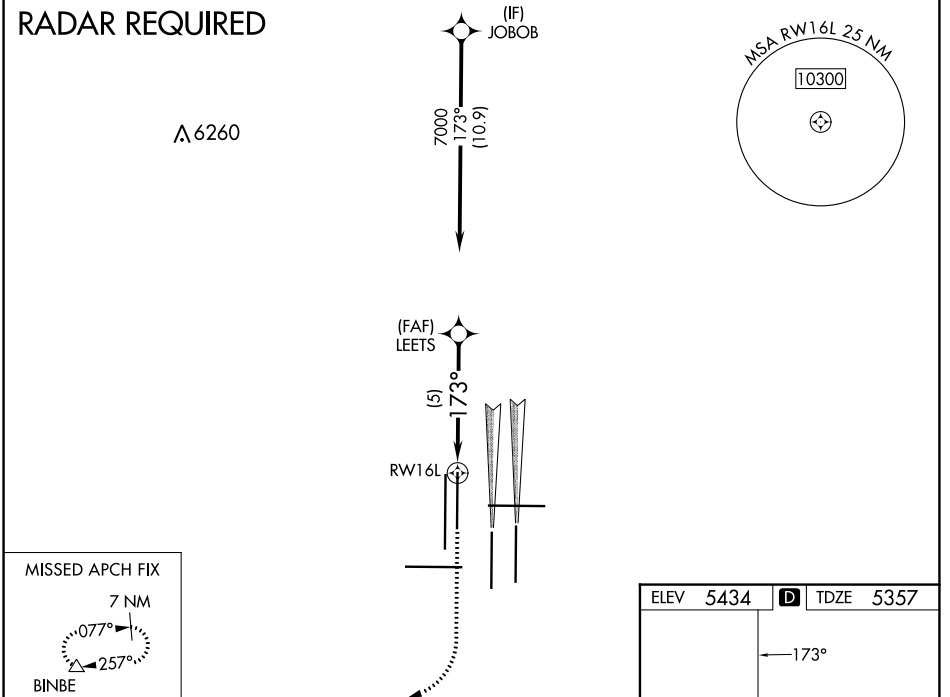
RNAV (RNP) Z RWY 16L



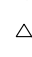
DENVER INTL (DEN)

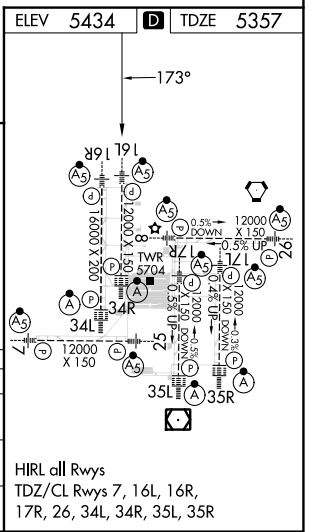
▼ For uncompensated Baro-VNAV systems, procedure NA below -25°C (-13°F) or above 45°C (114°F). GPS required. For inoperative MALSR, increase RNP 0.10 all Cats visibility to RVR 4000 and RNP 0.30 all Cats visibility to RVR 5000. Simultaneous approach authorized. Use of FD or AP providing RNAV track guidance required during simultaneous operations.

MALSR  MISSED APPROACH: Climb to 5900 then climbing right turn to 10000 direct BINBE and hold, continue climb-in-hold to 10000.

D-ATIS 125.6 379.9 (ARR) 134.025 (DEP)	DENVER APP CON 119.3 307.3 (N) 120.35 379.3 (S)	DENVER TOWER 135.3 351.95	GND CON 121.35 379.175 (W) 121.85 377.1 (E)	CLNC DEL 118.75	CPDLC
--	---	-------------------------------------	---	---------------------------	-------



5900	10000	BINBE	VGSi and RNAV glidepath not coincident (VGSi Angle 3.00/TCH 71).			
			LEETS			
			7000	7000		
			GP 3.00°			
			TCH 60			
			5 NM			
CATEGORY	A	B	C	D		
RNP 0.10 DA	5617/24		260 (200-½)			
RNP 0.30 DA	5683/32		326 (300-¾)			



SW-1, 31 OCT 2024 to 28 NOV 2024

SW-1, 31 OCT 2024 to 28 NOV 2024