

APP CRS	Rwy Idg	12000
173°	TDZE	5392
	Apt Elev	5434

RNAV (RNP) Z RWY 17R

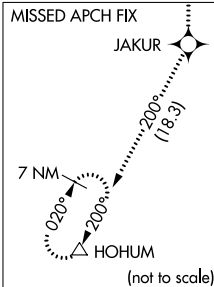
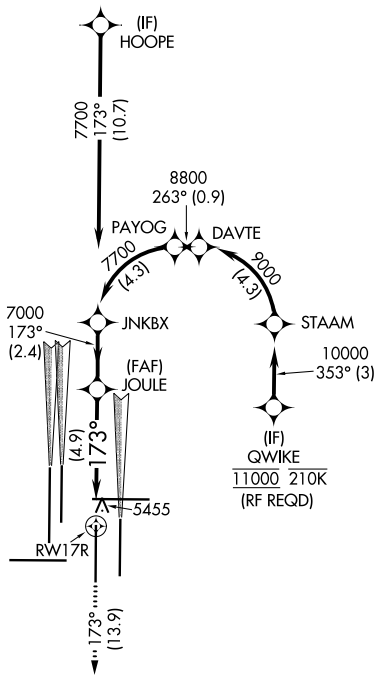
DENVER INTL (DEN)

<p>▽ GPS required. For inoperative MALSR, increase RNP 0.10 all Cats visibility to RVR 5000 and RNP 0.30 all Cats visibility to 1½ mile. Simultaneous approach authorized. Use of FD or AP providing RNAV track guidance required during simultaneous operations. For uncompensated Baro-VNAV systems, procedure NA below -25°C (-13°F) or above 45°C (114°F).</p>	<p>MALSR</p>	<p>MISSED APPROACH: Climb to 10000 on track 173° to JAKUR and on track 200° to HOHUM and hold.</p>

D-ATIS 125.6 379.9 (ARR) 134.025 (DEP)	DENVER APP CON 119.3 307.3 (N) 120.35 379.3 (S)	DENVER TOWER 124.3 322.45	GND CON 121.35 379.175 (W) 121.85 377.1 (E)	CLNC DEL 118.75	CPDLC
--	---	-------------------------------------	---	---------------------------	-------

RADAR REQUIRED

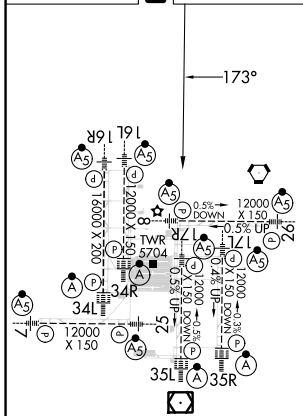
A 6260



SW-1, 31 OCT 2024 to 28 NOV 2024

SW-1, 31 OCT 2024 to 28 NOV 2024

ELEV 5434	D	TDZE 5392
-----------	----------	-----------



HIRL all Rwys
TDZ/CL Rwys 7, 16L, 16R, 17R,
26, 34L, 34R, 35L, 35R

10000	JAKUR	tr 173°	HOHUM	tr 200°	VGSI and RNAV glidepath not coincident (VGSI Angle 3.00°/TCH 69°).	JNKBX
See planview for multiple IF locations.						
			JOULE	7000	173°	7700
		RWY 17R		7000		
						GP 3.00° TCH 60
			4.9 NM		2.4 NM	
CATEGORY	A	B	C	D		
RNP 0.10 DA	5722/32 330 (300-5/8)					
RNP 0.30 DA	5894/60 502 (500-1¼)					

AUTHORIZATION REQUIRED