

APP CRS	Rwy Idg	12000
353°	TDZE	5370
	Apt Elev	5434

RNAV (RNP) Z RWY 35R

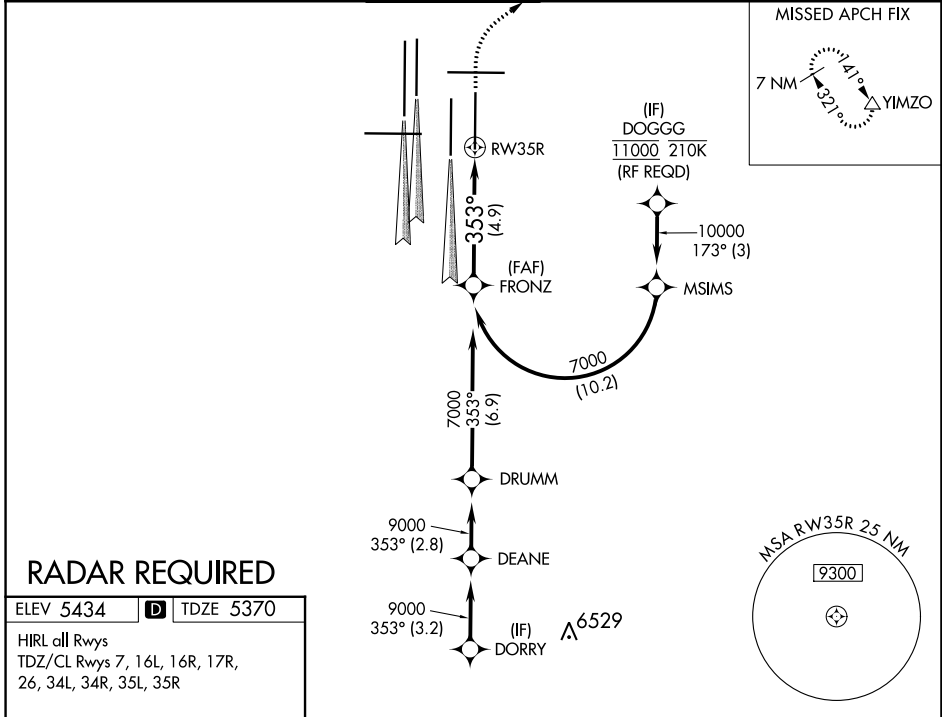
DENVER INTL (DEN)

▽ For uncompensated Baro-VNAV systems, procedure NA below -25°C (-13°F) or above 45°C (114°F). GPS required. For inoperative ALSF, increase RNP 0.10 all Cats visibility to RVR 4500 and RNP 0.30 all Cats visibility to RVR 5000. Simultaneous approach authorized. Use of FD or AP providing RNAV track guidance required during simultaneous operations.

ALSF-2

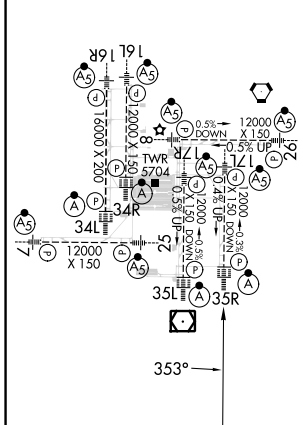
MISSED APPROACH: Climb to 5900, then climbing right turn to 8000 direct YIMZO and hold.

D-ATIS 125.6 379.9 (ARR) 134.025 (DEP)	DENVER APP CON 119.3 307.3 (N) 120.35 379.3 (S)	DENVER TOWER 132.35 239.275	GND CON 121.35 379.175 (W) 121.85 377.1 (E)	CLNC DEL 118.75	CPDLC
--	---	---------------------------------------	---	---------------------------	-------



RADAR REQUIRED

ELEV 5434	D	TDZE 5370
HIRL all Rwys		
TDZ/CL Rwys 7, 16L, 16R, 17R, 26, 34L, 34R, 35L, 35R		



VGSI and RNAV glidepath not coincident (VGSI Angle 3.00/TCH 66).

5900	8000	YIMZO

7000

353°

GP 3.00° TCH 59

See planview for multiple IF locations.

4.9 NM

CATEGORY	A	B	C	D
RNP 0.10 DA		5631/24	261 (200-1/2)	
RNP 0.30 DA		5702/32	332 (300-5/8)	

AUTHORIZATION REQUIRED

SW-1, 31 OCT 2024 to 28 NOV 2024

SW-1, 31 OCT 2024 to 28 NOV 2024