

# ZIMMR THREE DEPARTURE (RNAV)

AL-9077 (FAA)

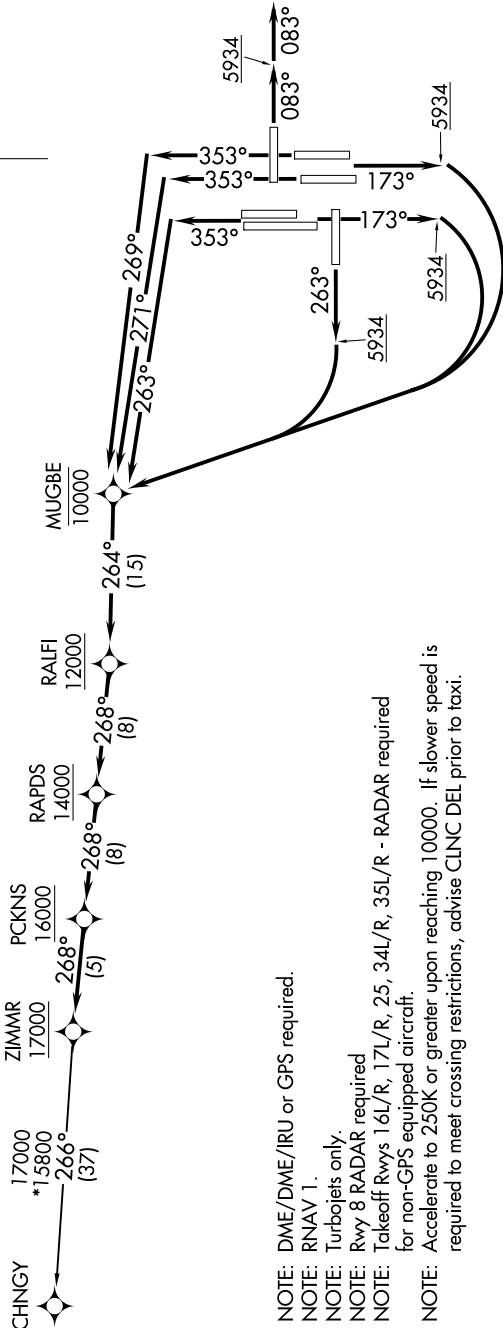
DENVER INTL (DEN)  
DENVER, COLORADO

SW-1, 31 OCT 2024 to 28 NOV 2024

## TOP ALTITUDE: FL230

**TAKEOFF MINIMUMS**  
Rwys 7, 26: NA-ATC.  
Rwy 8: Standard.

- Rwy 16L: Standard with minimum climb of 400' per NM to 5934, then minimum climb of 220' per NM to 14000.
- Rwy 16R: Standard with minimum climb of 400' per NM to 5934, then minimum climb of 225' per NM to 14800.
- Rwy 17L: Standard with minimum climb of 400' per NM to 5934, then minimum climb of 210' per NM to 15500.
- Rwy 17R: Standard with minimum climb of 400' per NM to 5934, then minimum climb of 215' per NM to 14300.
- Rwy 25: Standard with minimum climb of 425' per NM to 5934, then minimum climb of 230' per NM to 15700.
- Rwy 34L: Standard with minimum climb of 400' per NM to 5934, then minimum climb of 230' per NM to 14600.
- Rwy 34R: Standard with minimum climb of 400' per NM to 5934, then minimum climb of 220' per NM to 15700.
- Rwy 35L: Standard with minimum climb of 400' per NM to 5934, then minimum climb of 215' per NM to 14000.
- Rwy 35R: Standard with minimum climb of 400' per NM to 5934, then minimum climb of 210' per NM to 14500.



- NOTE: DME/DME/IRU or GPS required.
- NOTE: RNAV 1.
- NOTE: Turbojets only.
- NOTE: Rwy 8 RADAR required
- NOTE: Takeoff Rwys 16L/R, 17L/R, 25, 34L/R, 35L/R - RADAR required for non-GPS equipped aircraft.
- NOTE: Accelerate to 250K or greater upon reaching 10000. If slower speed is required to meet crossing restrictions, advise CINC DEL prior to taxi.

(NARRATIVE ON FOLLOWING PAGE)

NOTE: Chart not to scale.

# ZIMMR THREE DEPARTURE (RNAV)

DENVER, COLORADO  
DENVER INTL (DEN)

SW-1, 31 OCT 2024 to 28 NOV 2024