

WAAS CH <b>61306</b> <b>W34A</b>	APP CRS <b>344°</b>	Rwy Idg TDZE Apt Elev	<b>6101</b> <b>2201</b> <b>2211</b>
--	------------------------	-----------------------------	---

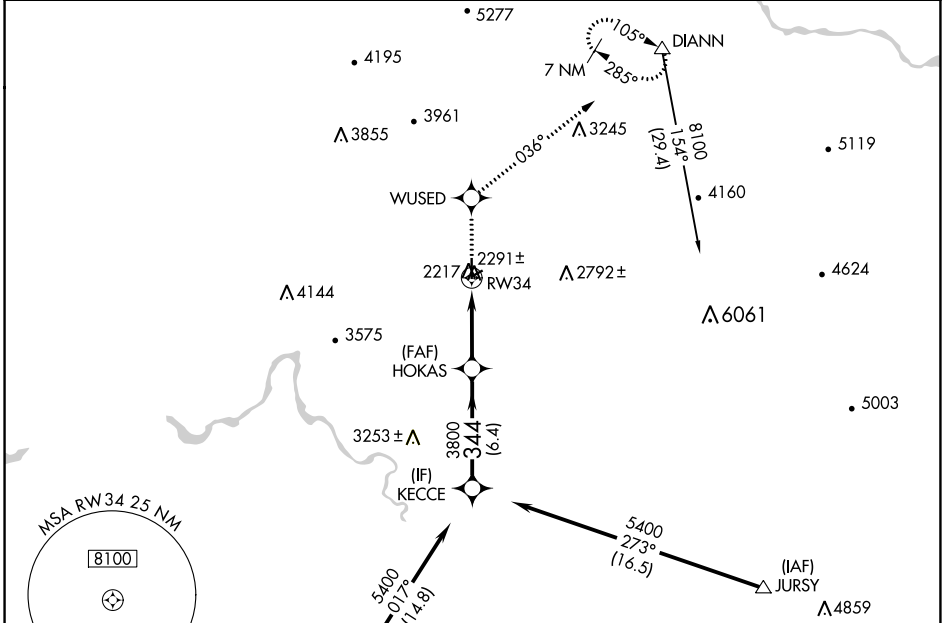
# RNAV (GPS) RWY 34

DEER PARK (DEW)

**⚠** For uncompensated Baro-VNAV systems, LNAV/VNAV NA below -19°C (-2°F) or above 44°C (111°F). When local altimeter setting not received, use Spokane Intl altimeter setting and increase all DA/MDA 80 feet and all visibilities ¼ SM. Circling NA west of Rwy 16-34. DME/DME RNP-0.3 NA. VDP and Baro-VNAV NA when using Spokane Intl altimeter setting.

**MISSED APPROACH:** Climb to 8100 direct WUSED and via 036° track to DIANN and hold, continue climb-in-hold to 8100.

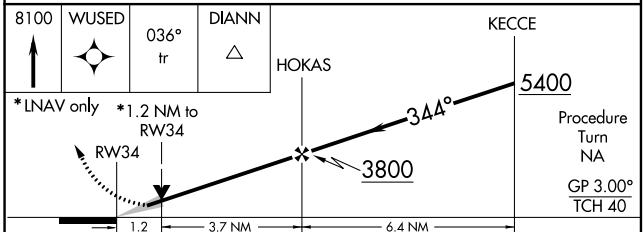
ASOS <b>135.175</b>	SPOKANE APP CON <b>123.75 282.25</b>	UNICOM <b>123.0</b> (CTAF) <b>0</b>
------------------------	---	--



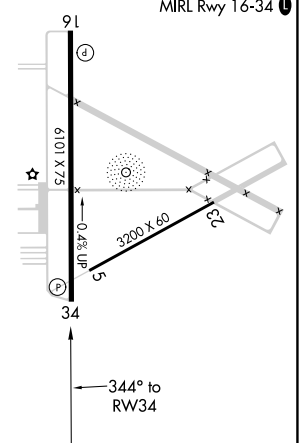
NW-1, 31 OCT 2024 to 28 NOV 2024

NW-1, 31 OCT 2024 to 28 NOV 2024

ELEV 8100	WUSED	036° tr	DIANN	KECCCE
-----------	-------	---------	-------	--------



ELEV 2211	TDZE 2201
-----------	-----------



CATEGORY	A	B	C	D
LPV DA	2466-1		265 (300-1)	
LNAV/VNAV DA	2551-1¼		350 (400-1¼)	
LNAV MDA	2600-1 399 (400-1)		2600-1¼ 399 (400-1¼)	
<b>C</b> CIRCLING	2700-1 489 (500-1)	2700-1½ 489 (500-1½)		2860-2 649 (700-2)