

WAAS CH <b>72714</b> <b>W24A</b>	APP CRS <b>238°</b>	Rwy ldg <b>4500</b> TDZE <b>928</b> Apt Elev <b>933</b>
--	------------------------	---

# RNAV (GPS) RWY 24

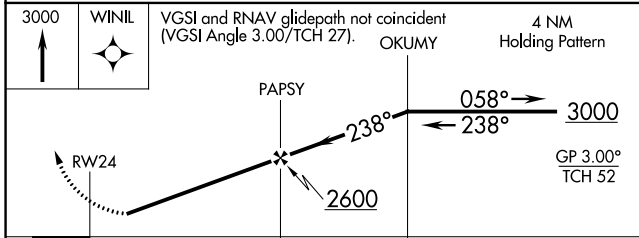
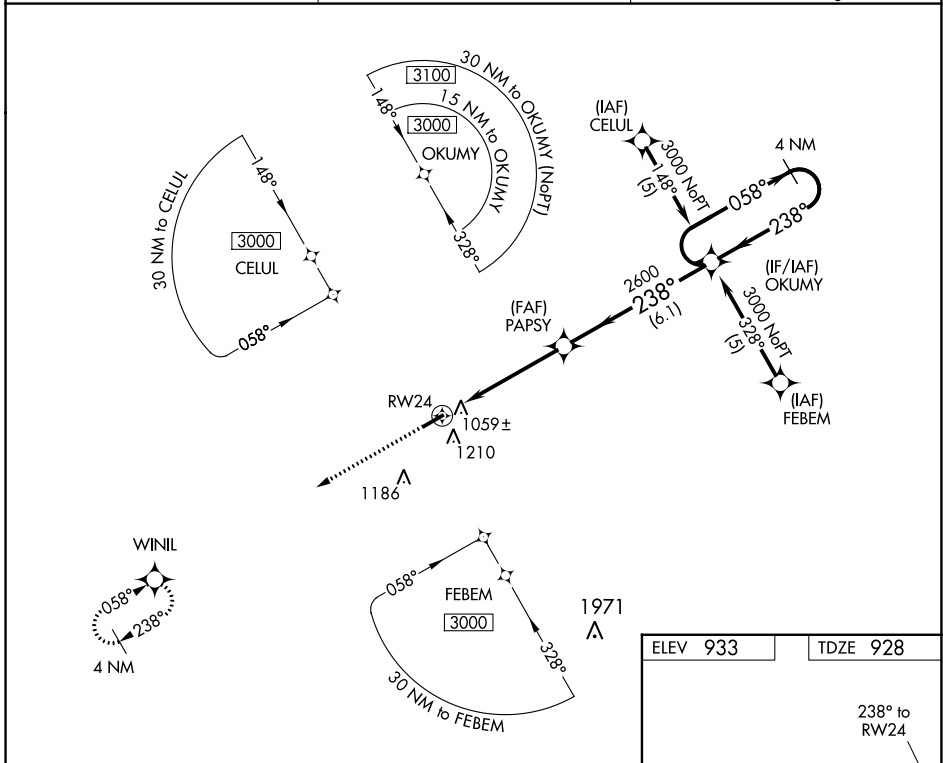
SULLIVAN RGNL (UUU)

Straight-in minimums NA at night. Circling to Rwy 24 NA at night. Baro-VNAV NA when using Rolla Ntl altimeter setting. For uncompensated Baro-VNAV systems, LNAV/VNAV NA below -16°C (4°F) or above 54°C (130°F). DME/DME RNP-0.3 NA. Visibility reduction by helicopters NA.

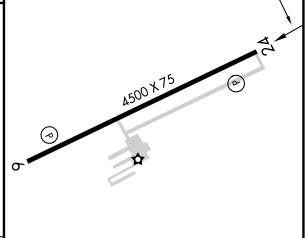
NA When local altimeter setting not received, use Rolla Ntl altimeter setting and increase all DA 98 feet and all MDA 100 feet, increase LPV and LNAV/VNAV Cat A and B visibility ¼ mile.

MISSED APPROACH: Climb to 3000 direct WINIL and hold.

AWOS-3PT <b>119.375</b>	KANSAS CITY CENTER <b>128.35 284.675</b>	UNICOM <b>122.7 (CTAF) 0</b>
----------------------------	---	---------------------------------



ELEV 933	TDZE 928
----------	----------



CATEGORY	A	B	C	D
LPV DA	1178-1	250 (300-1)		NA
LNAV/VNAV DA	1392-1¾	464 (500-1¾)		NA
LNAV MDA	1460-1	532 (600-1)		NA
CIRCLING	1520-1	587 (600-1)		NA

MIRL Rwy 6-24 0

NC-3, 31 OCT 2024 to 28 NOV 2024

NC-3, 31 OCT 2024 to 28 NOV 2024