

WAAS CH 82336 W33A	APP CRS 333°	Rwy Idg 2630 TDZE 147 Apt Elev 147
--	------------------------	---

RNAV (GPS) RWY 33

KINGSTON-ULSTER (20N)

RNP APCH - GPS.

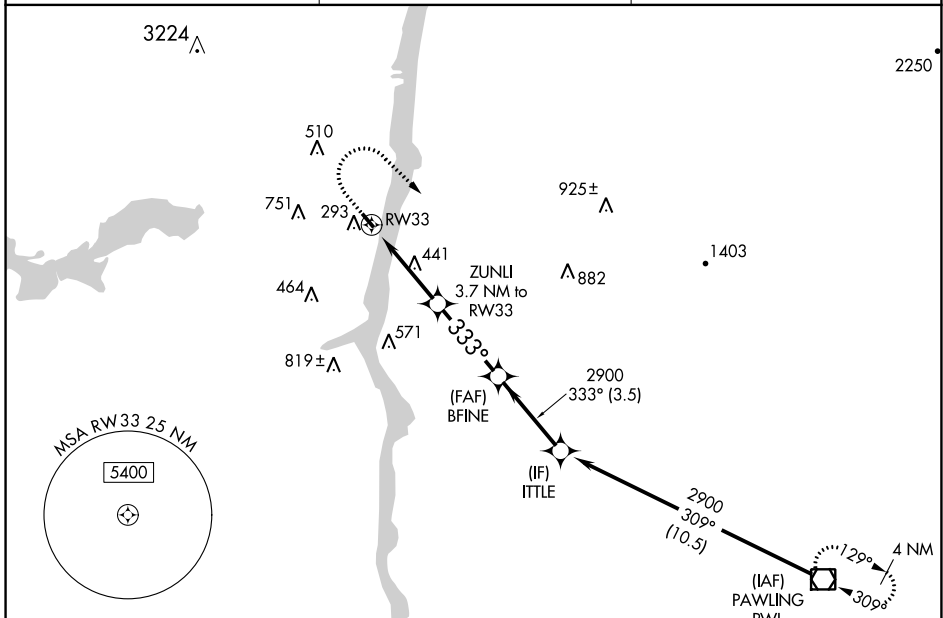
Use Hudson altimeter setting. When not received, use Newburgh altimeter setting and increase all MDA 60 feet. Baro-VNAV NA. Rwy 33 helicopter visibility reduction below 1 SM NA. Straight-in/Circling Rwy 33 at night, operational VGSI required, remain on or above VGSI glidepath until threshold. Circling Rwy 15 NA at night.

MISSED APPROACH: Climb to 600, then climbing right turn to 3000 direct PWL VOR/DME and hold.

NEW YORK APP CON
132.75 363.1

UNICOM
122.8 (CTAF)

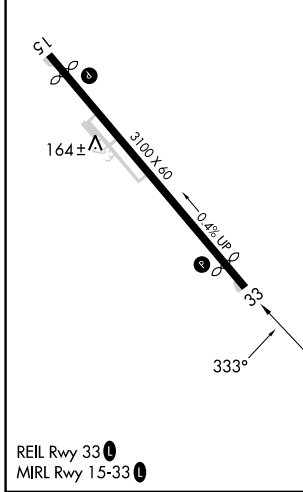
123.3



NE-2, 31 OCT 2024 to 28 NOV 2024

NE-2, 31 OCT 2024 to 28 NOV 2024

ELEV 147	D	TDZE 147
----------	----------	----------



600		3000	PWL	VGSI and RNAV glidepath not coincident (VGSI Angle 3.60/TCH 53).
↑	↷	□	ZUNLI 3.7 NM to RW33	ITTLE
*LNAV only.		RW33	2900	333° 2900
		1600*	2900	GP 3.59° TCH 60
		3.7 NM	3.4 NM	3.5 NM
CATEGORY	A	B	C	D
LPV DA	499-1	352 (400-1)		NA
LNAV/VNAV DA	635-1 3/8	489 (500-1 3/8)		NA
LNAV MDA	880-1 733 (800-1)	880-1 1/4 733 (800-1 1/4)		NA
C CIRCLING	880-1 733 (800-1)	960-1 1/4 813 (900-1 1/4)		NA