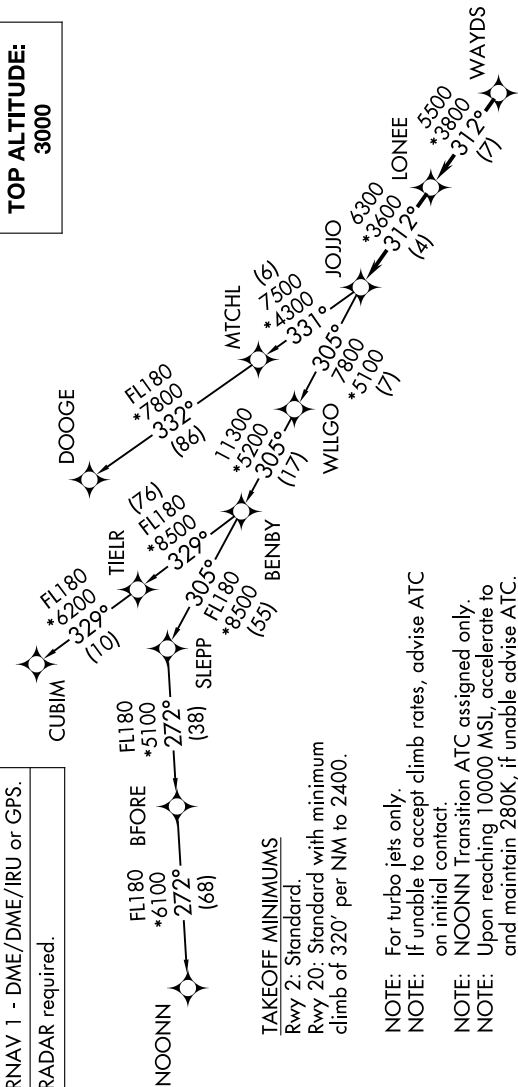


JOJO FIVE DEPARTURE (RNAV)

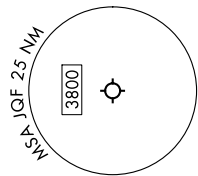
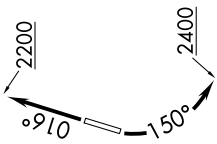
SE-2, 31 OCT 2024 to 28 NOV 2024

RNAV 1 - DME/DME/IRU or GPS.
RADAR required.



TOP ALTITUDE:
3000

CHARLOTTE DEP CON
128.325 307.8
ATIS *
133.675
CLNC DEL
118.55
121.85
GND CON
CONCORD TOWER *
134.65 (CTAF)
UNICOM
122.95



NOTE: Chart not to scale.

DEPARTURE ROUTE DESCRIPTION

TAKEOFF RUNWAY 2: Climb on heading 016° to 2200, then on heading assigned by ATC, thence. . . .

TAKEOFF RUNWAY 20: Climbing left turn heading 150° to 2400, then on heading assigned by ATC, thence. . . .

. . . on RADAR vectors to WAYDS, then on depicted route to JOJJO. Then on assigned transition. Maintain 3000, expect filed altitude within 10 minutes after departure.

CUBIM TRANSITION (JOJJO5.CUBIM)
DOOGE TRANSITION (JOJJO5.DOOGE)
NOONN TRANSITION (JOJJO5.NOONN)

JOJO FIVE DEPARTURE (RNAV)

SE-2, 31 OCT 2024 to 28 NOV 2024