

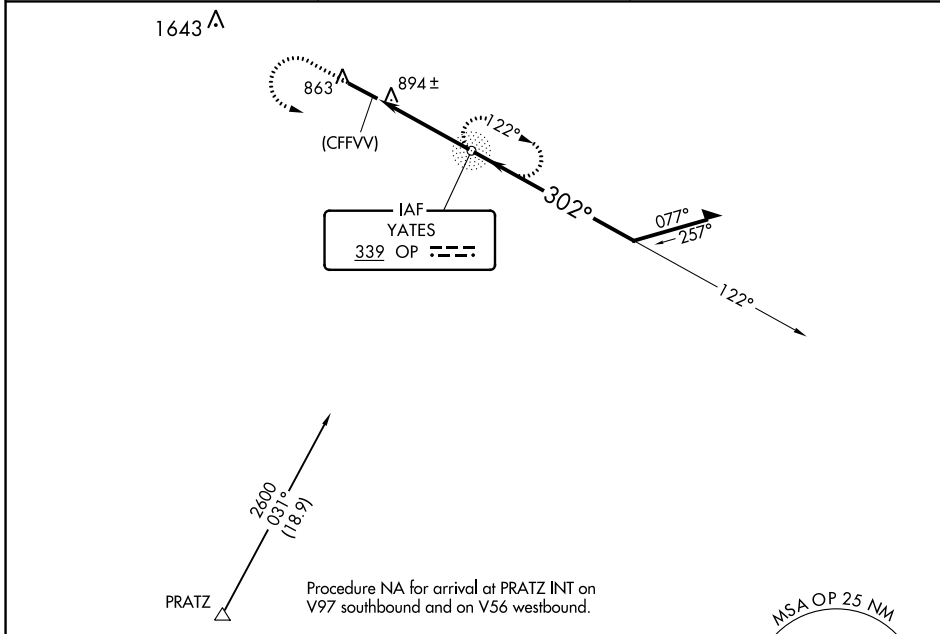
NDB OP 339	APP CRS 302°	Rwy Idg 4962
		TDZE 796
		Apt Elev 798

NDB RWY 30

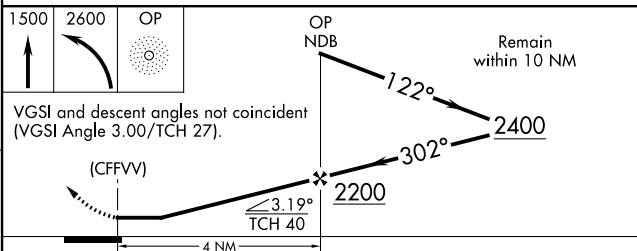
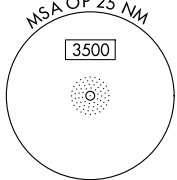
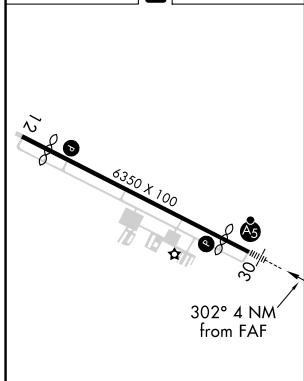
THOMASTON-UPSON COUNTY (OPN)

	For inop ALS, increase S-30 Cats A, B visibility to 1 SM and Cats C, D to 1 1/8 SM.	MALSR 	MISSED APPROACH: Climb to 1500 then climbing left turn to 2600 direct YATES NDB and hold, continue climb-in-hold to 2600.

AWOS-3 133.975	ATLANTA APP CON ★ 124.2 279.6	UNICOM 122.8 (CTAF) 0
--------------------------	---	---------------------------------



ELEV 798	D	TDZE 796
----------	----------	----------



CATEGORY	A	B	C	D
S-30	1200-3/4 404 (500-3/4)			
CIRCLING	1220-1 422 (500-1)	1260-1 462 (500-1)	1260-1 1/2 462 (500-1 1/2)	1680-3 882 (900-3)

FAF to MAP 4 NM					
Knots	60	90	120	150	180
Min:Sec	4:00	2:40	2:00	1:36	1:20

SE-4, 31 OCT 2024 to 28 NOV 2024

SE-4, 31 OCT 2024 to 28 NOV 2024