

LOC I-TV 109.7	APP CRS 357°	Rwy Idg 5002 TDZE 86 Apt Elev 86
--------------------------	------------------------	---

ILS or LOC RWY 36

VICKSBURG TALLULAH RGNL (TVR)

RNP APCH - GPS required for procedure entry at BARNE.

ADF required.

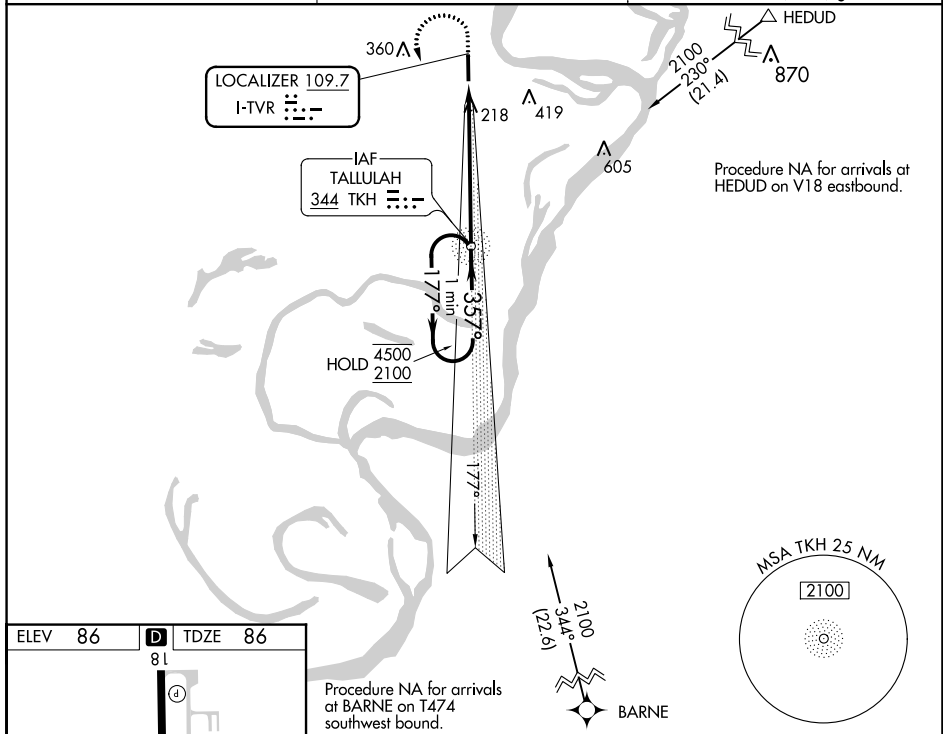
⚠ For inop ALS when using Vicksburg Muni, MS altimeter setting, increase S-LOC Cats C and D visibility to 1 3/8 SM. When local altimeter setting not received, use Vicksburg Muni, MS altimeter setting: increase S-ILS 36 DA to 309 feet; increase all MDAs 40 feet and visibility S-LOC 36 Cats C/D 1/8 SM and Circling Cats C/D 1/4 SM.

SSALR



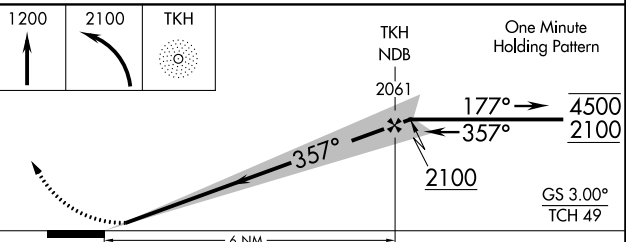
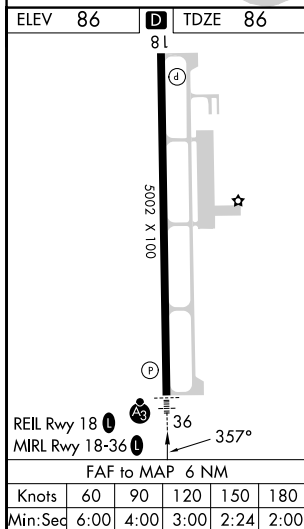
MISSED APPROACH: Climb to 1200 then climbing left turn to 2100 direct TKH NDB and hold.

ASOS 118.525	MEMPHIS CENTER 132.5 259.1	UNICOM 123.0 (CTAF)
------------------------	--------------------------------------	-------------------------------



Procedure NA for arrivals at HEDUD on V18 eastbound.

Procedure NA for arrivals at BARNE on T474 southwest bound.



CATEGORY	A	B	C	D
S-ILS 36	286-1/2		200 (200-1/2)	
S-LOC 36	540-1/2	454 (500-1/2)	540-7/8	454 (500-7/8)
C CIRCLING	540-1	454 (500-1)	720-1 3/4 634 (700-1 3/4)	720-2 634 (700-2)