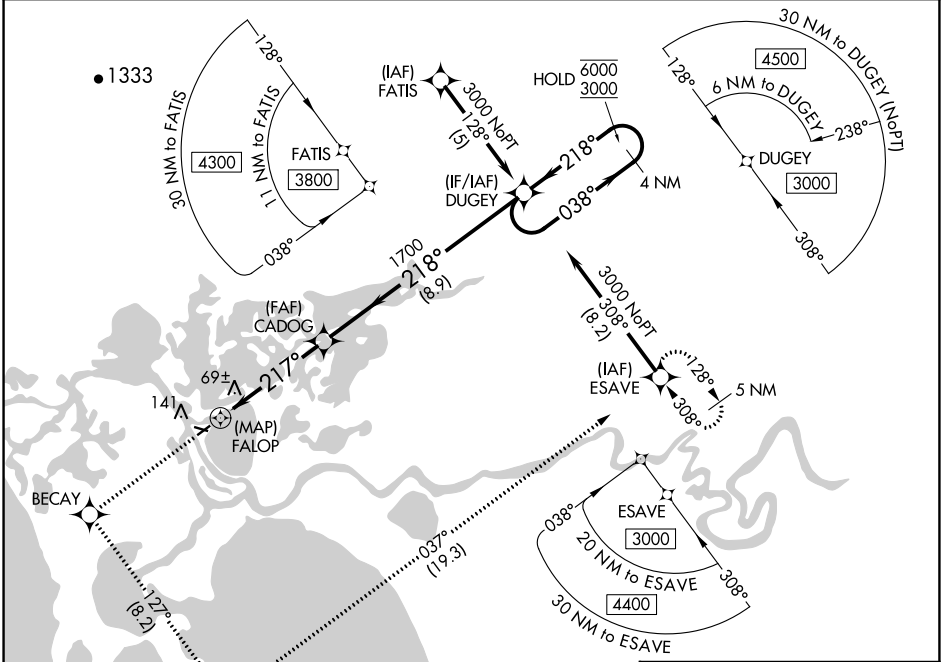


APP CRS	Rwy Idg	3002
217°	TDZE	17
	Apt Elev	17

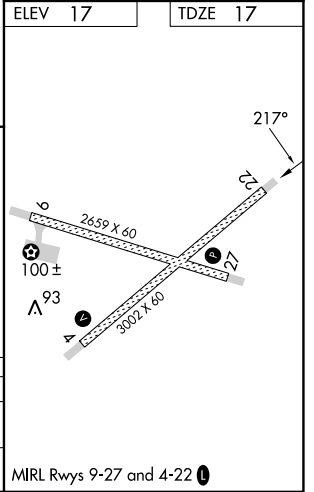
RNAV (GPS) Y RWY 22

SELAWIK (WLK) (PASK)

RNP APCH. ▼ Circling Rwy 9, 27 NA at night.		MISSED APPROACH: Climb to 3000 direct BECAY and left turn on track 127° to APACU and left turn on track 037° to ESAVE and hold.	
AWOS-3P 135.65	ANCHORAGE CENTER 119.2 263.0	KOTZEBUE RADIO 122.5	CTAF 122.7



ELEV 17	TDZE 17
3000 BECAY ↑	APACU ↙ tr 127°
ESAVE ↘ tr 037°	DUGEY ↘ tr 037°
CADOG	
FALOP ↙ tr 217°	DUGEY ↘ tr 218°
TCH 45 ≤ 3.05° 1700 → 6000 / ← 3000 4.6 NM 8.9 NM	
CATEGORY	A B C D
LNAV MDA	320-1 303 (400-1)
CIRCLING	480-1 463 (500-1) 580-1 563 (600-1) 580-1½ 563 (600-1½) 580-2 563 (600-2)



AK, 31 OCT 2024 to 26 DEC 2024

AK, 31 OCT 2024 to 26 DEC 2024