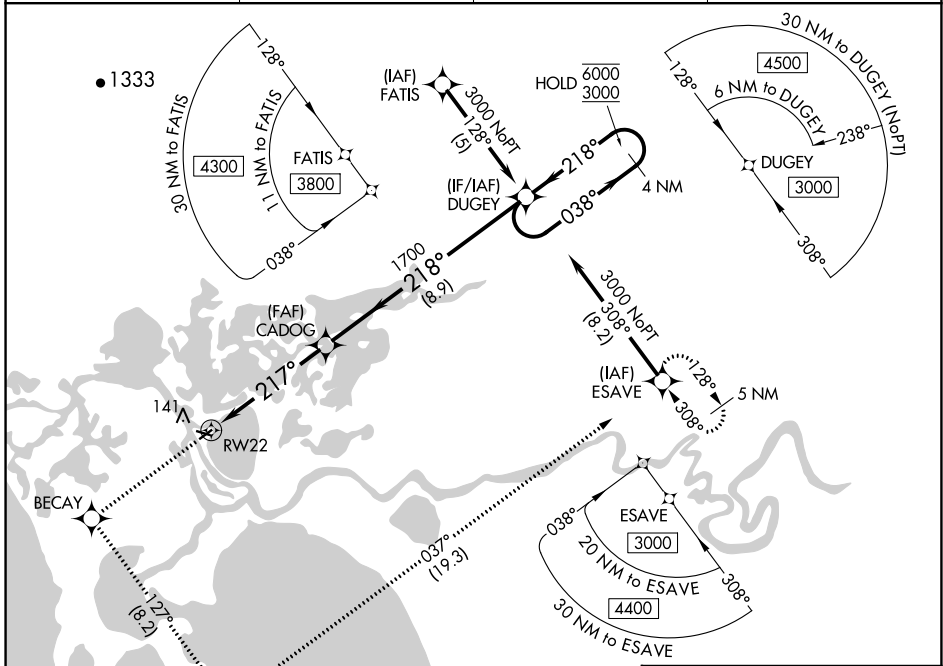


WAAS CH 40404 W22A	APP CRS 217°	Rwy Idg TDZE 17 Apt Elev 17	3002
----------------------------------------	------------------------	-------------------------------------------------	-------------

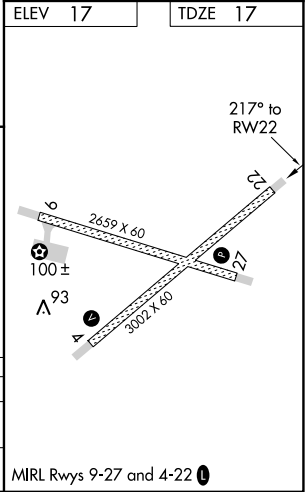
RNAV (GPS) Z RWY 22

SELAWIK (WLK) (PASK)

RNP APCH. ▼ For uncompensated Baro-VNAV systems, LNAV/VNAV NA below -25°C or above 49°C.		MISSED APPROACH: Climb to 3000 direct BECAY and left turn on track 127° to APACU and left turn on track 037° to ESAVE and hold.	
AWOS-3P 135.65	ANCHORAGE CENTER 119.2 263.0	KOTZEBUE RADIO 122.5	CTAF 122.7



ELEV 17	TDZE 17			
3000 BECAY	APACU	ESAVE	DUGEY	
↑	tr 127°	tr 037°	4 NM Holding Pattern	
CADOG		DUGEY		
RWY 22		4 NM Holding Pattern		
1700		6000		
217°		038°		
1700		3000		
5.1 NM		8.9 NM		
GP 3.00°	TCH 45			
CATEGORY	A	B	C	D
LPV DA		267-1	250 (300-1)	
LNAV/VNAV DA		364-1¼	347 (400-1¼)	



AK, 31 OCT 2024 to 26 DEC 2024

AK, 31 OCT 2024 to 26 DEC 2024

MIRL Rwy 9-27 and 4-22