

WAAS CH 70323 W18A	APP CRS 184°	Rwy Idg TDZE 777 Apt Elev 777
---------------------------------	------------------------	---

RNAV (GPS) RWY 18

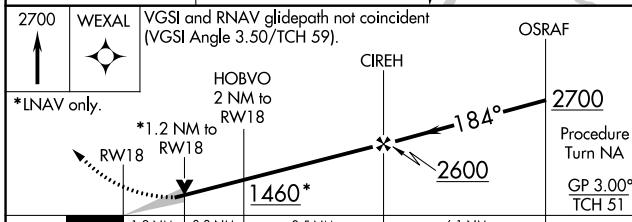
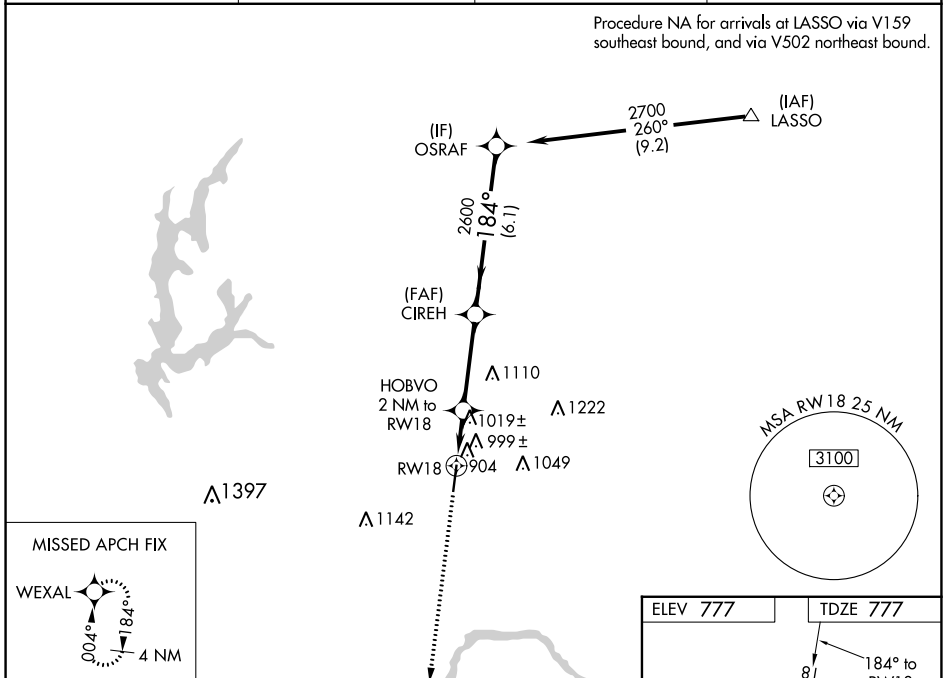
MIDWEST NTL AIR CENTER (GPH)

NA For uncompensated Baro-VNAV systems, LNAV/VNAV NA below -16°C (4°F) or above 54°C (130°F). DME/DME RNP- 0.3 NA.
Baro-VNAV and VDP NA when using Kansas City Intl altimeter setting.
Obtain local altimeter setting on CTAF; when not received, use Kansas City Intl altimeter setting and increase all DAs 79 feet and all LPV and LNAV/VNAV visibilities ¼ mile; increase all MDAs 80 feet and circling visibility Cat C ¼ mile.

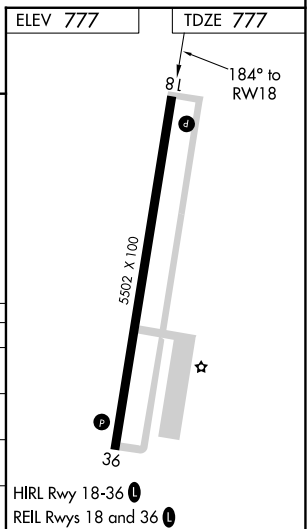
MISSED APPROACH: Climb to 2700 direct WEXAL and hold.

AWOS-3T 120.275	KANSAS CITY APP CON 118.4 307.35	CLNC DEL 118.2	UNICOM 122.7 (CTAF)
---------------------------	--	--------------------------	-------------------------------

Procedure NA for arrivals at LASSO via V159 southeast bound, and via V502 northeast bound.



CATEGORY	A	B	C	D
LPV DA	1189-1½ 412 (500-1½)			NA
LNAV/VNAV DA	1324-2 547 (600-2)			NA
LNAV MDA	1280-1 503 (600-1)		1280-1½ 503 (600-1½)	NA
CIRCLING	1300-1 523 (600-1)	1320-1 543 (600-1)	1360-1½ 583 (600-1½)	NA



NC-3, 31 OCT 2024 to 28 NOV 2024

NC-3, 31 OCT 2024 to 28 NOV 2024