

WAAS CH <b>90225</b> <b>W05A</b>	APP CRS <b>048°</b>	Rwy Idg <b>4589</b> TDZE <b>45</b> Apt Elev <b>45</b>
--	------------------------	---

# RNAV (GPS) RWY 5

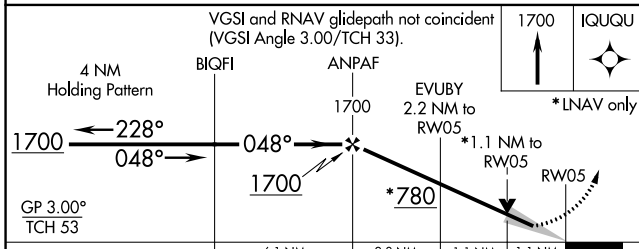
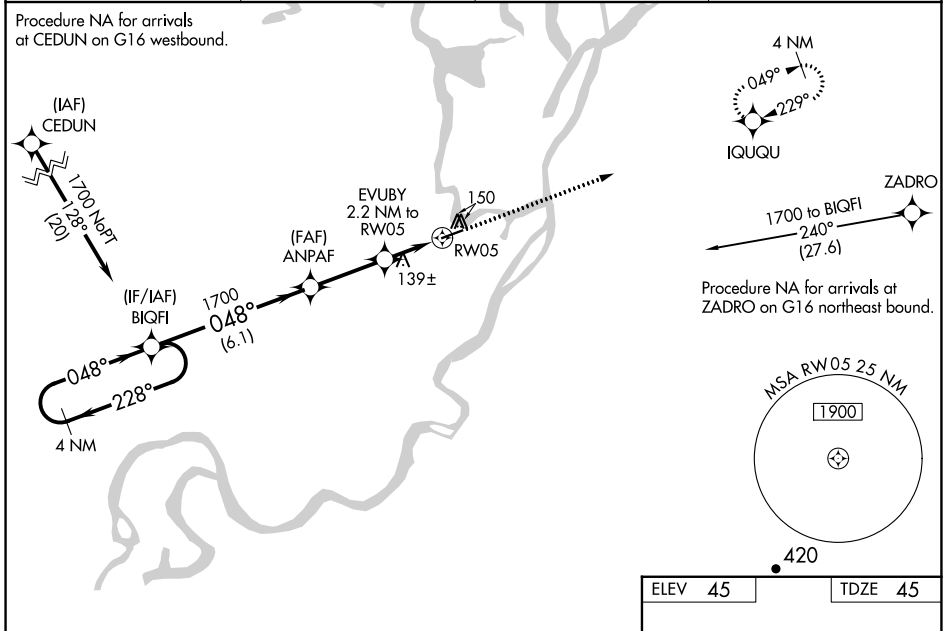
NUIQSUT (AQT) (PAQT)

**⚠** Inoperative table does not apply. For uncompensated Baro-VNAV systems, LNAV/VNAV NA below -25°C (-13°F) or above 54°C (130°F). DME/DME RNP-0.3 NA. When local altimeter setting not received, use Deadhorse altimeter setting and increase all DA 123 feet and all MDA 140 feet, increase LPV all Cats, LNAV/VNAV all Cats, and Circling Cat C visibility ¼ mile, increase LNAV Cat C visibility ½ mile. VDP and Baro-VNAV NA with Deadhorse altimeter setting.

MALSF

MISSED APPROACH: Climb to 1700 direct IQUQU and hold.

ASOS <b>135.35</b>	ANCHORAGE CENTER <b>119.4</b>	DEADHORSE RADIO <b>122.5</b>	CTAF <b>122.8</b>
-----------------------	----------------------------------	---------------------------------	----------------------



CATEGORY	A	B	C	D
LPV DA		295-1 250 (300-1)		NA
LNAV/VNAV DA		295-1 250 (300-1)		NA
LNAV MDA	440-1 395 (400-1)		440-1½ 395 (400-1½)	NA
CIRCLING	520-1 475 (500-1)		520-1½ 475 (500-1½)	NA

ELEV 45 TDZE 45

MIRL Rwy 5-23  
REIL Rwy 23

AK, 31 OCT 2024 to 26 DEC 2024

AK, 31 OCT 2024 to 26 DEC 2024