

APP CRS 188°	Rwy Idg TDZE Apt Elev	4199 5996 5999
------------------------	-----------------------------	---

RNAV (GPS) RWY 19

VALLE (40G)

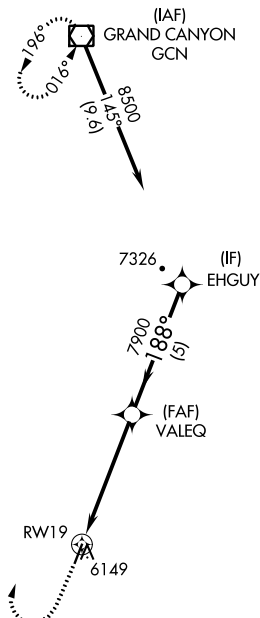
RNP APCH.
 Procedure NA at night. Rwy 19 helicopter visibility reduction below 1 SM NA. Use Grand Canyon NH Park altimeter setting; when not received, procedure NA.

MISSED APPROACH: Climb to 7000 then climbing right turn to 10000 direct GCN VOR/DME and hold.

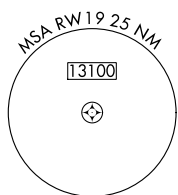
GCN ASOS
124.3

LOS ANGELES CENTER
124.85 319.2

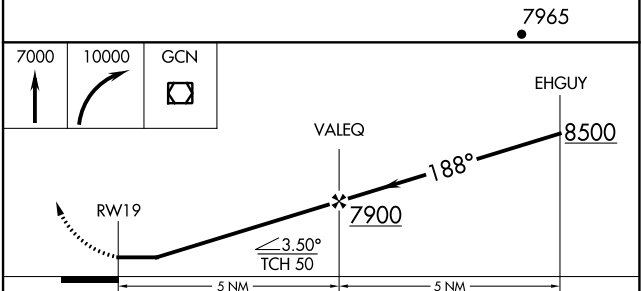
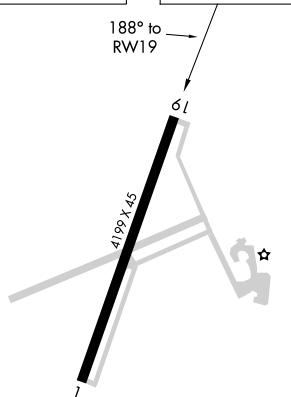
UNICOM
122.8 (CTAF)



Procedure NA for arrival on GCN VOR/DME airway radials 062 CW 080.



ELEV 5999 | TDZE 5996



CATEGORY	A	B	C	D
LNNAV MDA	6560-1	564 (600-1)	6560-1 ⁵ / ₈ 564 (600-1 ⁵ / ₈)	NA
CIRCLING	6620-1 621 (700-1)	6640-1 641 (700-1)	6640-1 ³ / ₄ 641 (700-1 ³ / ₄)	NA

SW-4, 31 OCT 2024 to 28 NOV 2024

SW-4, 31 OCT 2024 to 28 NOV 2024