

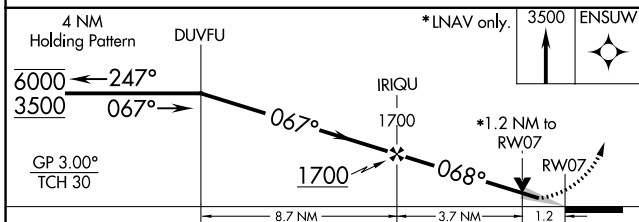
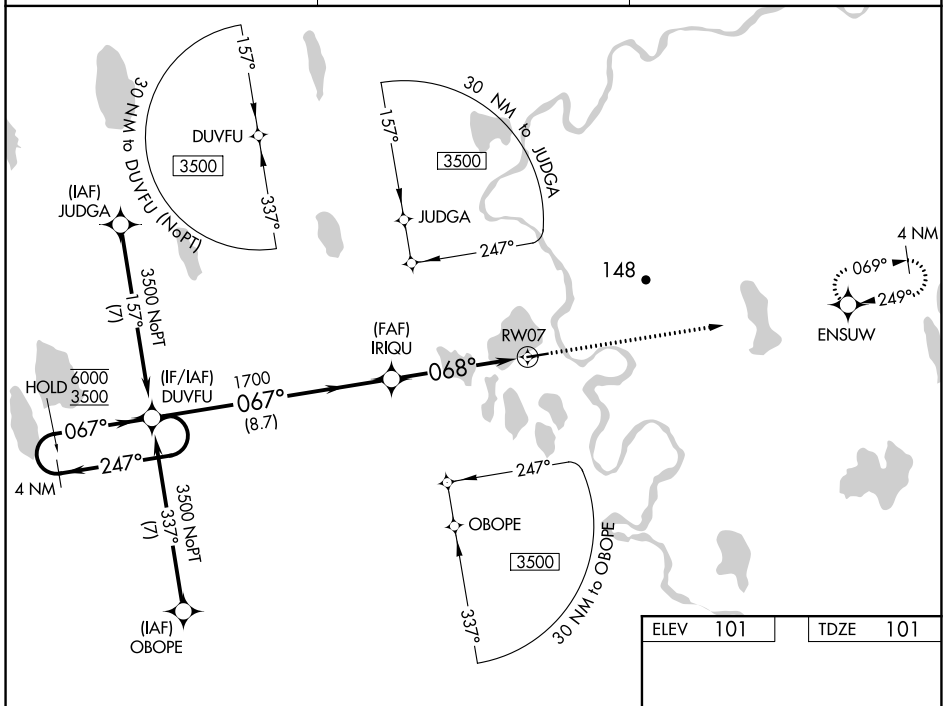
WAAS CH 93743 W07A	APP CRS 068°	Rwy Idg TDZE Apt Elev	4370 101 101
----------------------------------------	------------------------	-----------------------------	-----------------------------------------

RNAV (GPS) RWY 7

ATGASUK EDWARD BURNELL SR MEML (ATK)(PATQ)

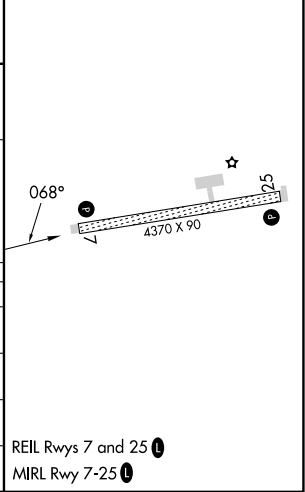
RNP APCH.	MISSED APPROACH: Climb to 3500 direct ENSUW and hold, continue climb-in-hold to 3500.
<p>⚠ For uncompensated Baro-VNAV systems, LNAV/VNAV NA below -22°C or above 54°C.</p>	

AWOS-3P 119.925	ANCHORAGE CENTER 135.3 239.25	CTAF 122.9
---------------------------	-----------------------------------------	----------------------



ELEV 101	TDZE 101
----------	----------

CATEGORY	A	B	C	D
LPV DA		351-1	250 (300-1)	
LNAV/VNAV DA		351-1	250 (300-1)	
LNAV MDA	500-1	399 (400-1)	500-1½	399 (400-1½)
C CIRCLING	500-1 399 (400-1)	560-1 459 (500-1)	560-1½ 459 (500-1½)	700-2 599 (600-2)



RNAV (GPS) RWY 7

AK, 31 OCT 2024 to 26 DEC 2024

AK, 31 OCT 2024 to 26 DEC 2024