

WAAS CH <b>73010</b> <b>W09A</b>	APP CRS <b>091°</b>	Rwy Idg <b>4100</b> TDZE <b>3669</b> Apt Elev <b>3703</b>
--	------------------------	---

# RNAV (GPS) Z RWY 9

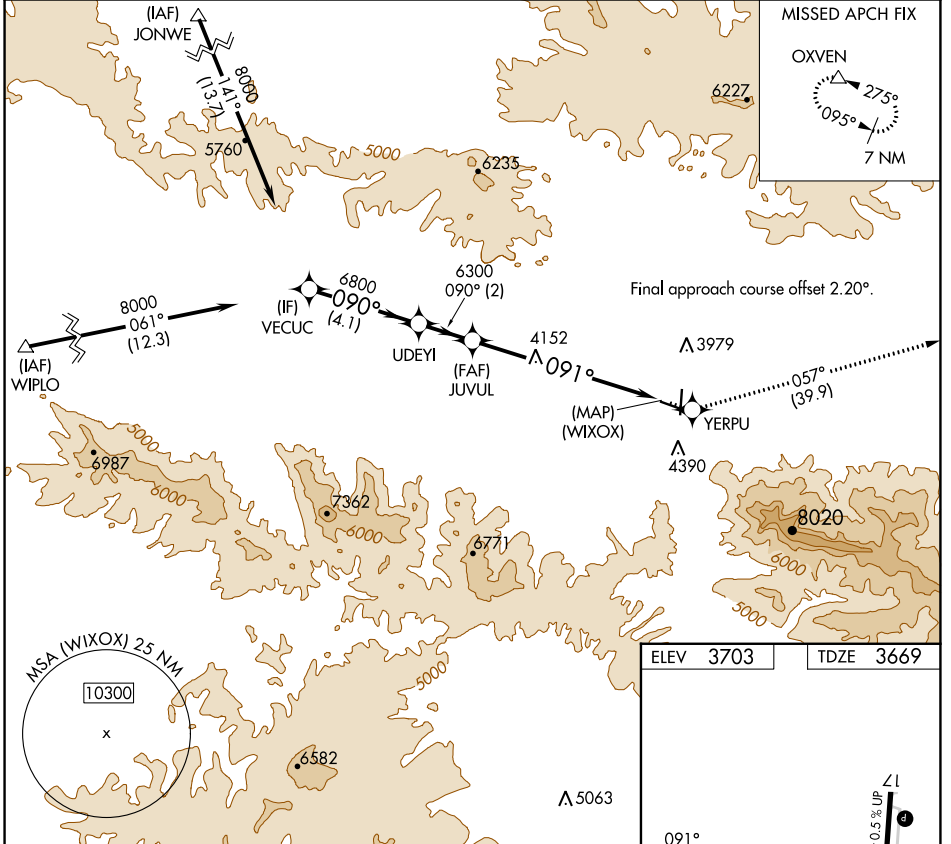
GRANT COUNTY RGNL/OGLIVIE FLD (GCD)

RNP APCH - GPS.

When local altimeter setting not received, procedure NA.  
Rwy 9 helicopter visibility reduction below 3/4 SM NA.

MISSED APPROACH: Climb to 12000 direct YERPU and on track 057° to OXVEN and hold, continue climb-in-hold to 12000.

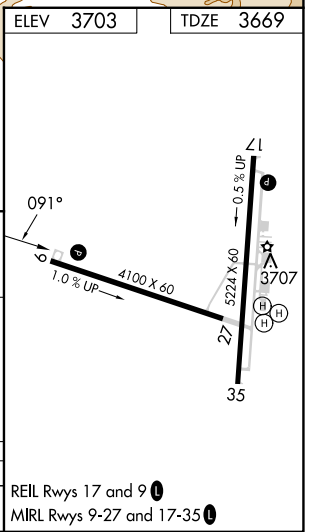
AWOS-3 <b>118.375</b>	SEATTLE CENTER <b>128.15 257.75</b>	UNICOM <b>122.8 (CTAF) 0</b>
--------------------------	--	---------------------------------



NW-1, 31 OCT 2024 to 28 NOV 2024

NW-1, 31 OCT 2024 to 28 NOV 2024

VECUC		UDEYI		JUUVUL		12000		YERPU		OXVEN	
8000		6800		6300		↑		✧		△	
GP 3.40°		6300		6300		↑		✧		△	
TCH 54		6300		6300		↑		✧		△	
4.1 NM		2 NM		7.1 NM							
CATEGORY	A	B	C	D							
LPV DA	4269-2			600 (600-2)	NA						



REIL Rwys 17 and 9  
MRL Rwys 9-27 and 17-35