

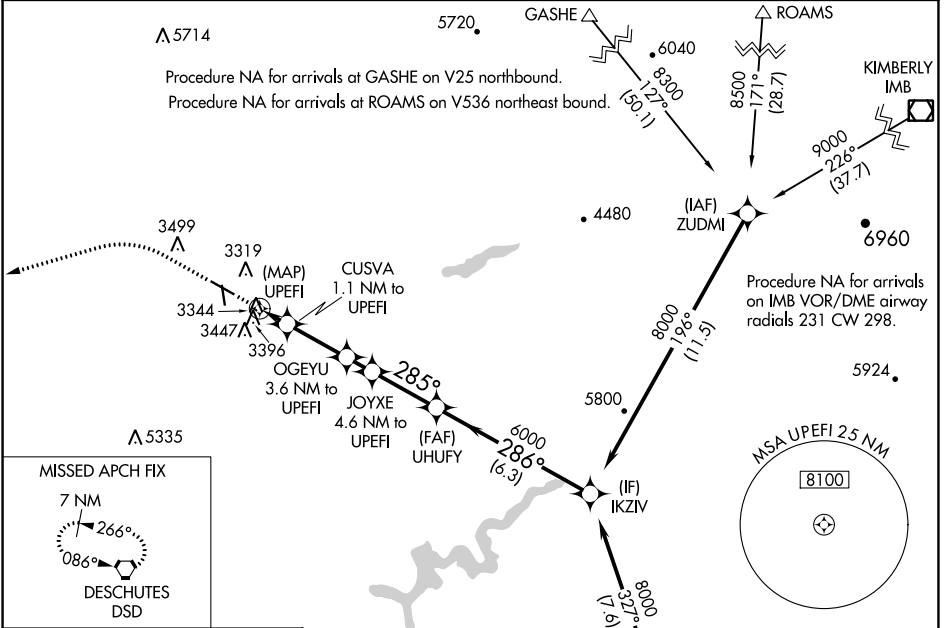
WAAS CH 56235 W29A	APP CRS 285°	Rwy Idg TDZE Apt Elev	5405 3240 3251
--	------------------------	-----------------------------	---

RNAV (GPS) RWY 29

PRINEVILLE (S39)

RNP APCH-GPS. ▼ ▲ Circling NA for Cat D south of Rwy 11-29. Circling Rwy 15 NA at night.	MISSED APPROACH: Climb to 4700 then climbing left turn to 7100 direct DSD VORTAC and hold.
---	--

AWOS-3PT 118.325	SEATTLE CENTER 126.15 269.475	UNICOM 122.7 (CTAF) 0
----------------------------	---	---------------------------------



NW-1, 31 OCT 2024 to 28 NOV 2024

NW-1, 31 OCT 2024 to 28 NOV 2024

ELEV 3251	TDZE 3240
-----------	-----------

MISSED APCH FIX
7 NM
266°
086°
DESCHUTES DSD

MIRL Rwy 11-29 0
LIRL Rwy 15-33 0

4700	7100	DSD				
↑		↻	◻			
UPEFI			CUSVA 1.1 NM to UPEFI	JOYXE 4.6 NM to UPEFI	UHFUY	IKZIV
↻			↘ 3.08° TCH 42			
↻			↘ 285°	↘ 285°	↘ 285°	↘ 285°
↻			↘ 6000	↘ 6000	↘ 6000	↘ 8000
↻			↘ 3980	↘ 4780	↘ 5140	↘ 8000
↻			↘ 1.1 NM	↘ 1.1 NM	↘ 2.5 NM	↘ 1 NM
↻			↘ 2.6 NM	↘ 6.3 NM		
CATEGORY	A	B	C	D		
LP MDA	3660-1¼		420 (500-1¼)			
LNAV MDA	3660-1¼		420 (500-1¼)			
☑ CIRCLING	3960-1¼ 709 (800-1¼)	4040-1¼ 789 (800-1¼)	4040-2¼ 789 (800-2¼)	4040-2½ 789 (800-2½)		