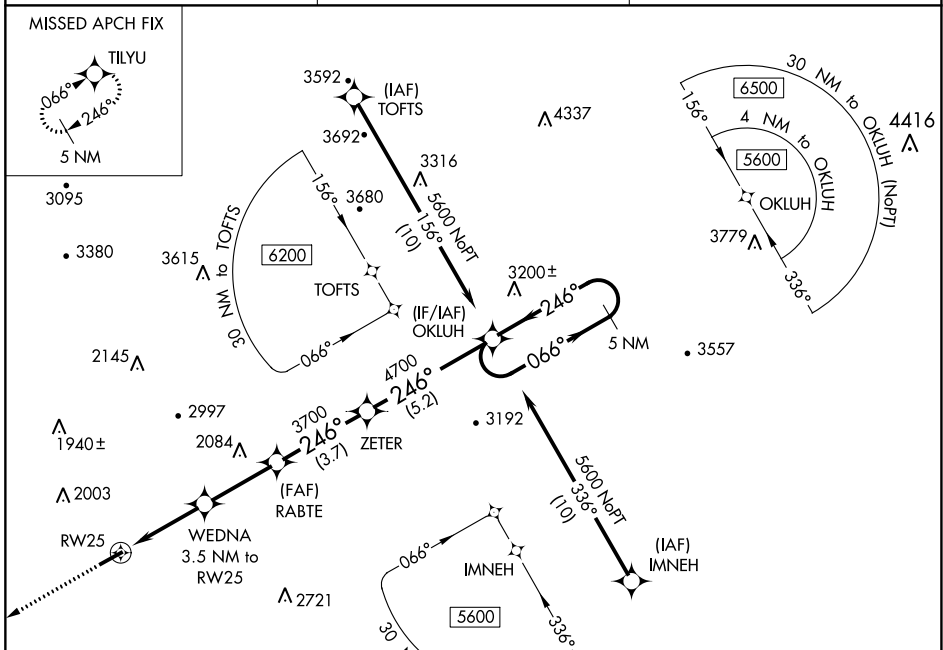


WAAS CH <b>82717</b> <b>W25A</b>	APP CRS <b>246°</b>	Rwy Idg <b>5003</b> TDZE <b>1411</b> Apt Elev <b>1411</b>
--	------------------------	---

# RNAV (GPS) RWY 25

LEE COUNTY (ØVG)

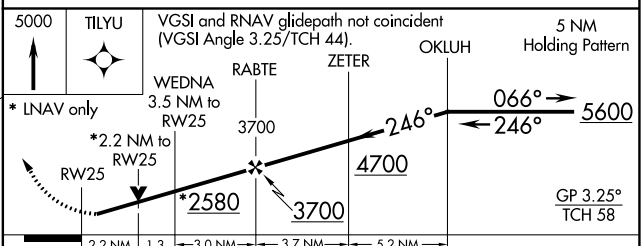
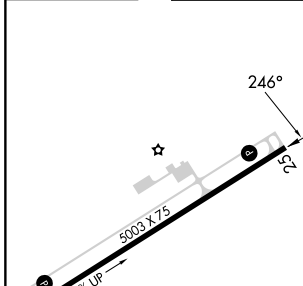
Helicopter visibility reduction below ¾ SM NA. DME/DME RNP-0.3 NA.	MISSED APPROACH: Climb to 5000 direct TILYU and hold, continue climb-in-hold to 5000.	
AWOS-3 <b>120.125</b>	ATLANTA CENTER <b>127.55 269.50</b>	CTAF <b>122.90</b>



NE-3, 31 OCT 2024 to 28 NOV 2024

NE-3, 31 OCT 2024 to 28 NOV 2024

ELEV 1411	TDZE 1411
-----------	-----------



CATEGORY LPV DA LNAV/DA VNAV LNAV MDA CIRCLING	A	B	C	D
		1714-1	303 (400-1)	NA
		2284-3	873 (900-3)	NA
	2220-1 809 (900-1)	2220-1¼ 809 (900-1¼)	2220-2½ 809 (900-2½)	NA
	2220-1	809 (900-1)	2600-3 1189 (1200-3)	NA