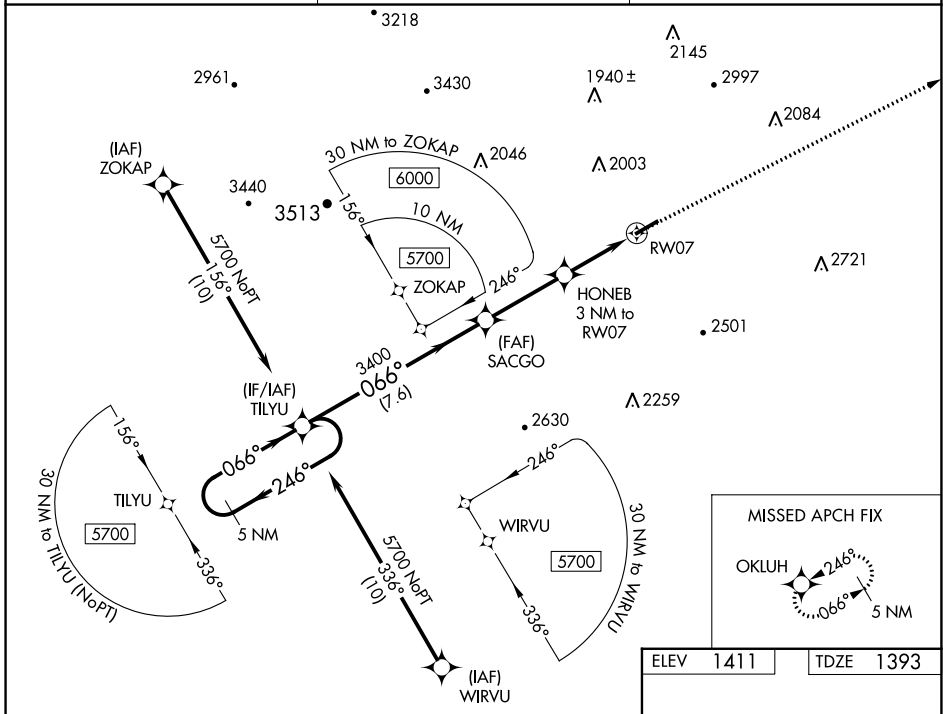


WAAS CH 78430 W07A	APP CRS 066°	Rwy Idg TDZE Apt Elev	5003 1393 1411
--	------------------------	-----------------------------	---

RNAV (GPS) RWY 7

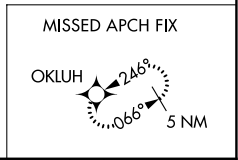
LEE COUNTY (ØVG)

<p>▼ DME/DME RNP-0.3 NA. Rwy 07 helicopter visibility reduction below ¾ SM NA. ▲ ** Missed approach requires minimum climb gradient of 240 feet per NM to 3400.</p>	<p>MISSED APPROACH: Climb to 5600 direct OKLUH and hold, continue climb-in-hold to 5600.</p>	
<p>AWOS-3 120.125</p>	<p>ATLANTA CENTER 127.55 269.50</p>	<p>CTAF 122.9 0</p>

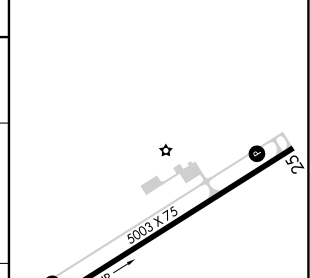
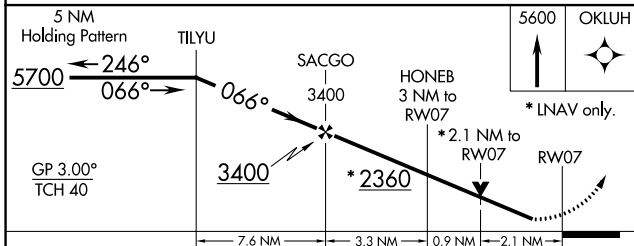


NE-3, 31 OCT 2024 to 28 NOV 2024

NE-3, 31 OCT 2024 to 28 NOV 2024



ELEV	1411	TDZE	1393
------	------	------	------



CATEGORY	A	B	C	D
LPV DA	**1643-1	250 (300-1)		NA
LPV DA	1881-1¾	488 (500-1¾)		NA
LNAV/VNAV DA	2024-2½	631 (700-2½)		NA
LNAV MDA	2080-1	687 (700-1)	2080-1¾ 687 (700-1¾)	NA
C CIRCLING	2140-1 729 (800-1)	2180-1 769 (800-1)	2600-3 1189 (1200-3)	NA

MIRL Rwy 7-25 0
REIL Rwy 7 and 25 0