

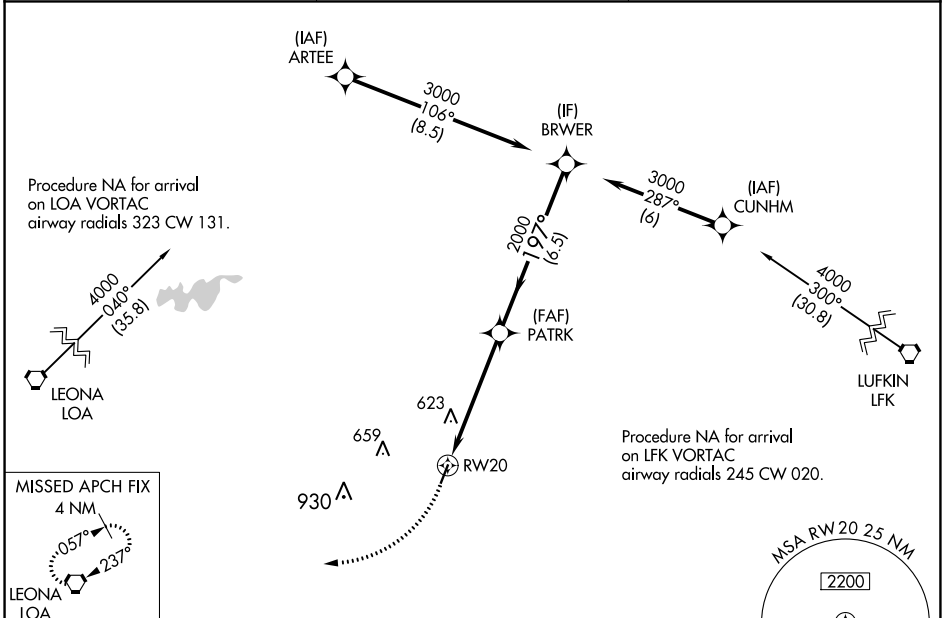
WAAS CH <b>65826</b> <b>W20A</b>	APP CRS <b>197°</b>	Rwy Idg TDZE Apt Elev	<b>4000</b> <b>348</b> <b>348</b>
--	------------------------	-----------------------------	---

# RNAV (GPS) RWY 20

HOUSTON COUNTY (DKR)

RNP APCH.	MISSED APPROACH: Climbing right turn to 4000 direct LOA VORTAC and hold.
<p>Procedure NA at night. Rwy 20 helicopter visibility reduction below 1 SM NA.</p>	

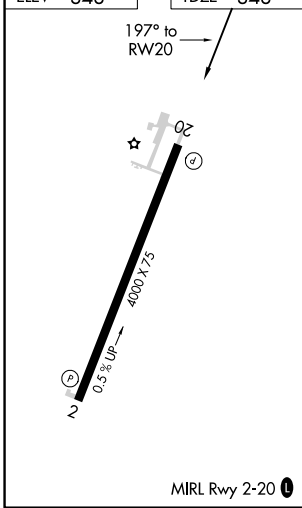
AWOS-3PT <b>118.775</b>	HOUSTON CENTER <b>134.8 269.6</b>	CTAF <b>122.9</b>
----------------------------	--------------------------------------	----------------------



SC-5, 31 OCT 2024 to 28 NOV 2024

SC-5, 31 OCT 2024 to 28 NOV 2024

ELEV	<b>348</b>	TDZE	<b>348</b>
------	------------	------	------------



4000 LOA		Visual Segment - Obstacles.			
RW20		PATRK		BRWR	
5.1 NM		6.5 NM		3000	
2000		197°			
CATEGORY	A	B	C	D	
LP MDA	880-1	532 (600-1)		NA	
LNAV MDA	900-1	552 (600-1)		NA	
CIRCLING	900-1	980-1	NA		
	552 (600-1)	632 (700-1)			