

WAAS CH <b>82418</b> <b>W18A</b>	APP CRS <b>186°</b>	Rwy Idg TDZE Apt Elev	<b>5700</b> <b>6763</b> <b>6763</b>
--	------------------------	-----------------------------	---

# RNAV (GPS) RWY 18

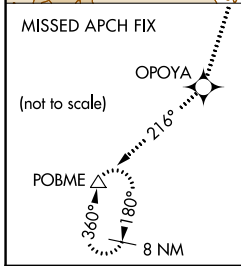
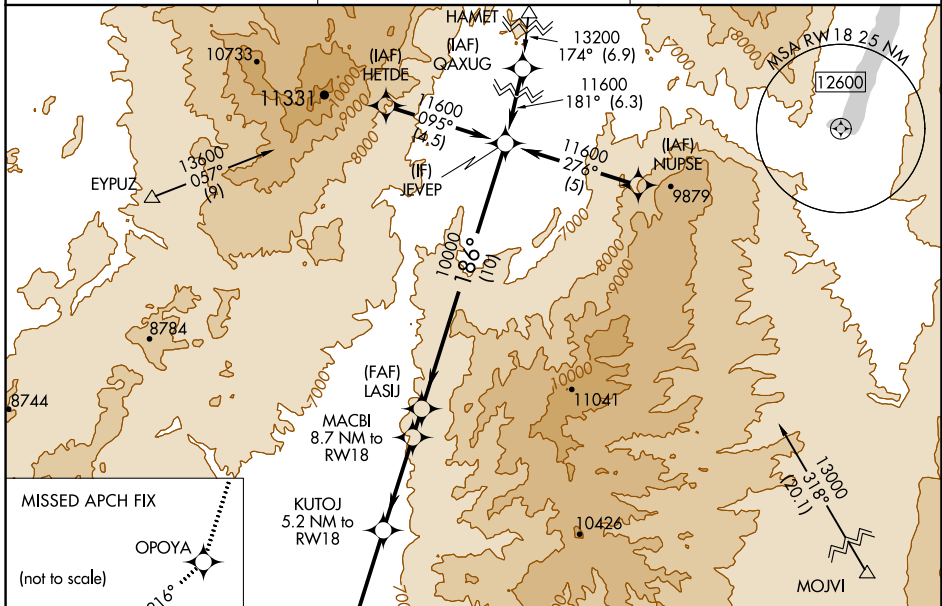
PANGUITCH MUNI (U55)

**⚠** For uncompensated Baro-VNAV systems, LNAV/VNAV NA below -28°C (-18°F) or above 54°C (130°F). DME/DME RNP-0.3 NA. When local altimeter setting not received use Bryce Canyon altimeter setting and increase all DA 149 feet and all MDA 160 feet, increase LPV visibility ¼ mile and increase LNAV visibility and Circling Cat B visibility ¼ mile. Baro-VNAV and VDP NA with Bryce Canyon altimeter setting.

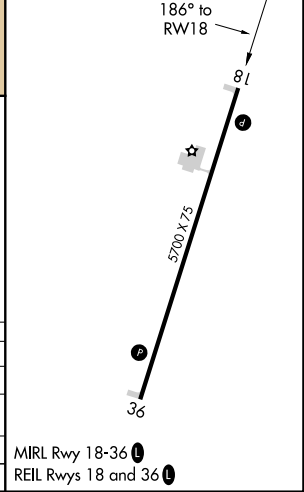
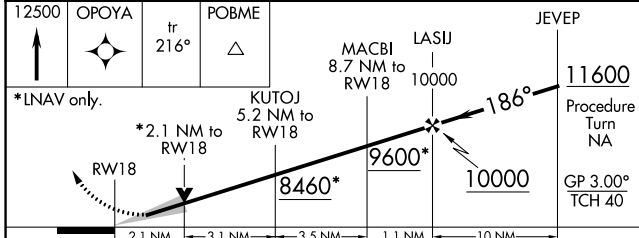
**⚠** -28°C

MISSED APPROACH: Climb to 12500 direct OPOYA and on track 216° to POBME and hold, continue climb-in-hold 12500.

AWOS-3 <b>133.125</b>	SALT LAKE CENTER <b>133.6 269.25</b>	CTAF <b>122.9</b>
--------------------------	---	----------------------



ELEV 6763	TDZE 6763
-----------	-----------



CATEGORY	A	B	C	D
LPV DA	6963-1	200 (200-1)		NA
LNAV/VNAV DA	7331-2	568 (600-2)		NA
LNAV MDA	7460-1	697 (700-1)		NA
<b>C</b> CIRCLING	7460-1	697 (700-1)		NA

MIRL Rwy 18-36  
REIL Rwy 18 and 36

SW-4, 31 OCT 2024 to 28 NOV 2024

SW-4, 31 OCT 2024 to 28 NOV 2024