

APP CRS <b>047°</b>	Rwy Idg TDZE Apt Elev	<b>6027</b> <b>2454</b> <b>2454</b>
------------------------	-----------------------------	---

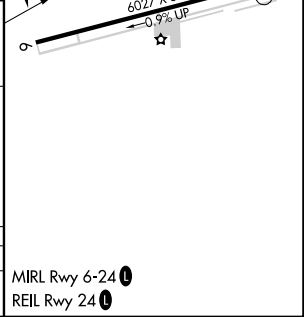
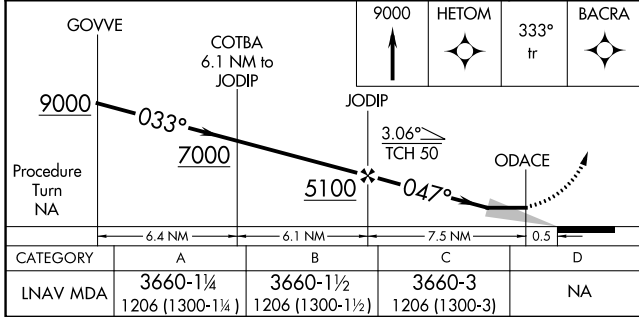
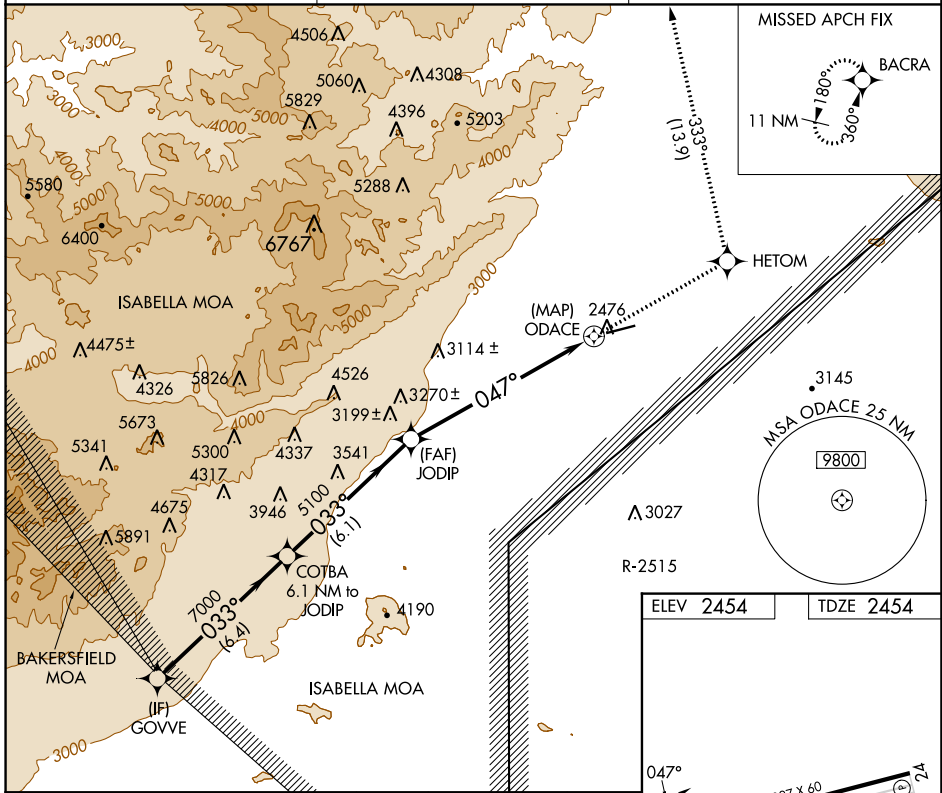
# RNAV (GPS) RWY 6

CALIFORNIA CITY MUNI (L71)

RNP APCH.  
RADAR required.  
▼ If local altimeter setting not received, use Edwards AFB altimeter setting and increase all MDAs 60 feet; if neither received, procedure not authorized.

MISSED APPROACH: Climb to 9000 direct HETOM and via 333° track to BACRA and hold, continue climb-in-hold to 9000.

AWOS-1 <b>120.875</b>	JOSHUA APP CON <b>133.65 348.7</b>	UNICOM <b>122.7 (CTAF)</b>
--------------------------	---------------------------------------	-------------------------------



CATEGORY	A	B	C	D
LNAV MDA	3660-1¼ 1206 (1300-1¼)	3660-1½ 1206 (1300-1½)	3660-3 1206 (1300-3)	NA

MIRL Rwy 6-24  
REIL Rwy 24

SW-3, 31 OCT 2024 to 28 NOV 2024

SW-3, 31 OCT 2024 to 28 NOV 2024