

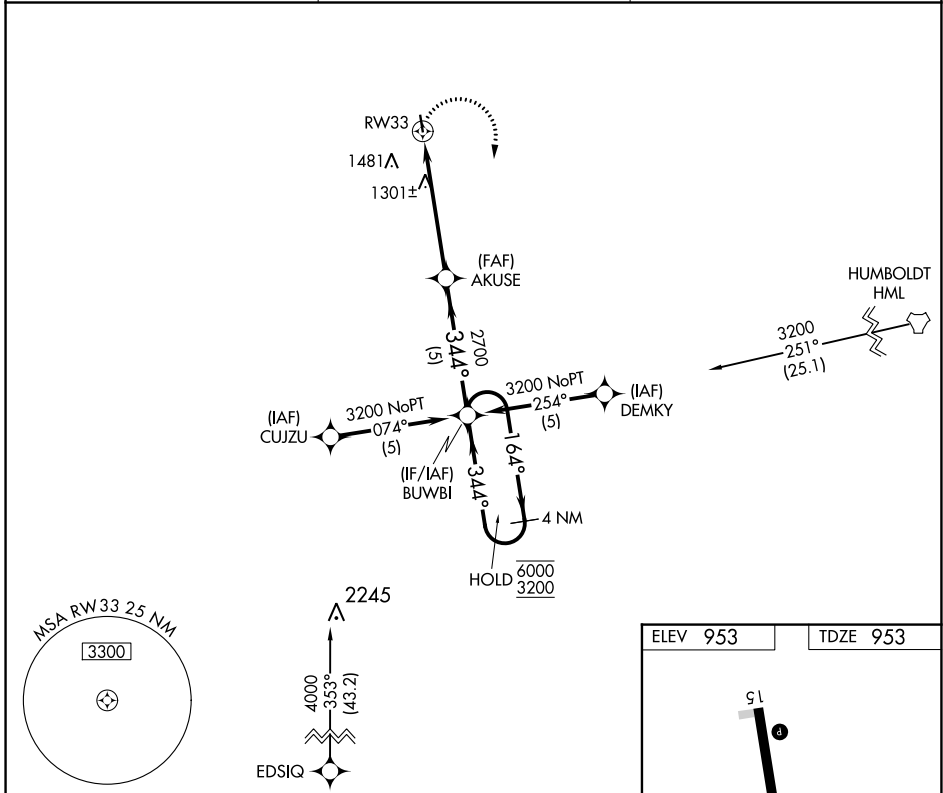
APP CRS	Rwy Idg	<b>3400</b>
<b>344°</b>	TDZE	<b>953</b>
	Apt Elev	<b>953</b>

# RNAV (GPS) RWY 33

WALHALLA MUNI (96D)

RNP APCH-GPS.	MISSED APPROACH: Climbing right turn to 3200 direct BUWBI and hold.
<p>▼ Rwy 33 helicopter visibility reduction below 3/4 SM NA.</p> <p>▲ When local altimeter setting not received, use Hallock altimeter setting.</p>	

AWOS-3PT <b>118.175</b>	MINNEAPOLIS CENTER <b>132.15 269.6</b>	CTAF <b>122.9</b>
----------------------------	---	----------------------



NC-1, 31 OCT 2024 to 28 NOV 2024

NC-1, 31 OCT 2024 to 28 NOV 2024

<p>3200 BUWBI</p> <p>VGSI and descent angles not coincident (VGSI Angle 3.00/TCH 28).</p>	<p>4 NM Holding Pattern</p> <p>6000 3200</p>			
<p>AKUSE</p> <p>2.2 NM to RW33</p> <p>3.00° TCH 40</p> <p>2700</p> <p>344°</p> <p>164°</p> <p>344°</p>				
<p>2.2</p> <p>3.2 NM</p> <p>5 NM</p>				
CATEGORY	A	B	C	D
LNVA MDA	1680-1	727 (800-1)	NA	
CIRCLING	1680-1 727 (800-1)	1960-1½ 1007 (1100-1½)	NA	

