

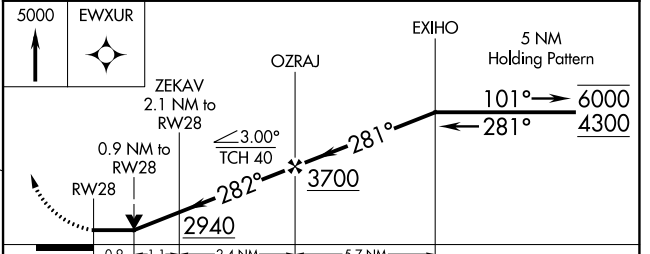
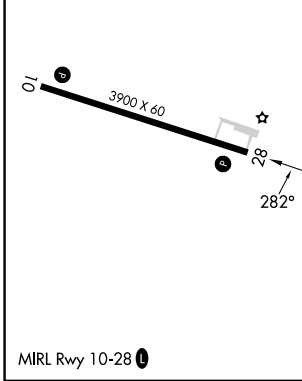
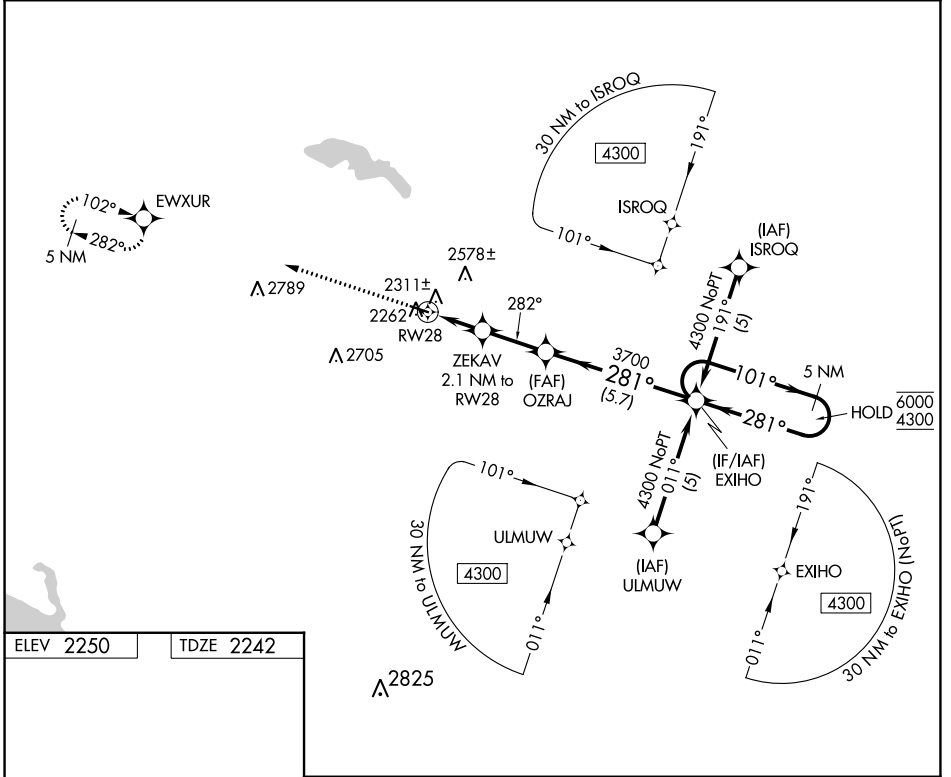
APP CRS	Rwy Idg	<b>3900</b>
<b>282°</b>	TDZE	<b>2242</b>
	Apt Elev	<b>2250</b>

# RNAV (GPS) RWY 28

STANLEY MUNI (Ø8D)

RNP APCH - GPS.	MISSED APPROACH: Climb to 5000 direct EWXUR and hold, continue climb-in-hold to 5000.
Rwy 28 helicopter visibility reduction below ¼ SM NA.	

AWOS-3 <b>121.1</b>	MINNEAPOLIS CENTER <b>127.6 279.6</b>	CTAF <b>122.9</b>
------------------------	--	----------------------



CATEGORY	A	B	C	D
LNAV MDA	2580-1	338 (400-1)	NA	
CIRCLING	2720-1 470 (500-1)	2940-1 690 (700-1)	NA	

NC-1, 31 OCT 2024 to 28 NOV 2024

NC-1, 31 OCT 2024 to 28 NOV 2024