

APP CRS <b>273°</b>	Rwy Idg <b>3300</b>
	TDZE <b>274</b>
	Apt Elev <b>274</b>

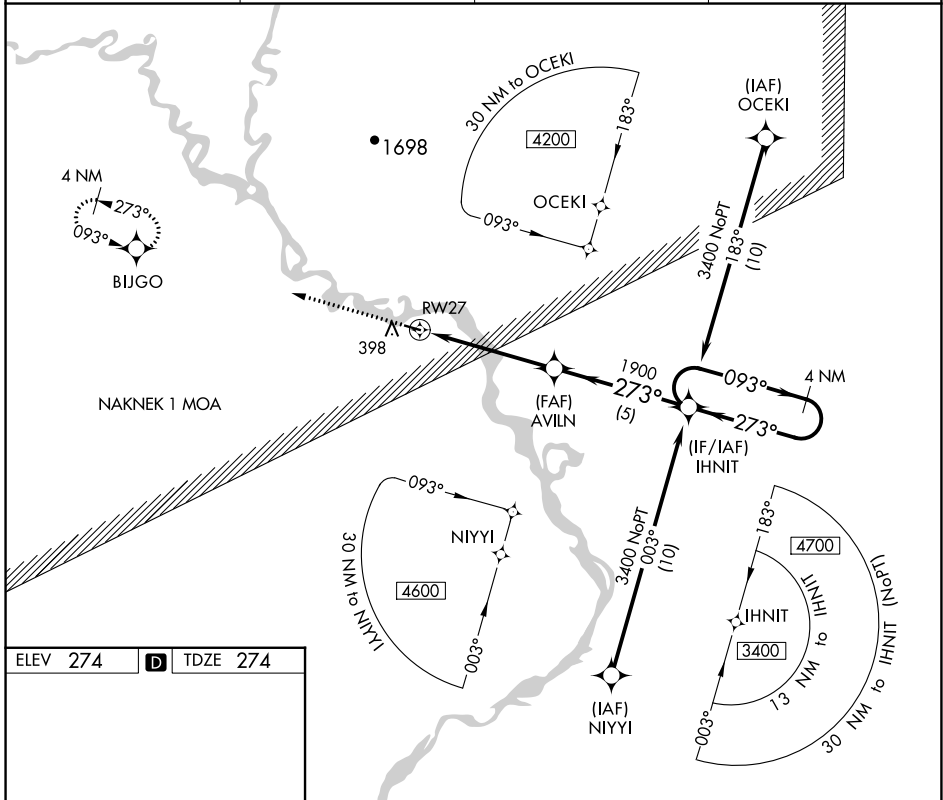
# RNAV (GPS) RWY 27

KOLIGANEK (JZZ) (P.AJZ)

**⚠** When local altimeter setting not received, use New Stuyahok altimeter setting and increase all MDAs 60 feet. DME/DME RNP-0.3 NA. Helicopter visibility reduction below 1 SM NA. Procedure NA at night.

**⚠** MISSED APPROACH: Climb to 2900 direct BIJGO and hold.

AWOS-3P <b>118.525</b>	ANCHORAGE CENTER <b>132.75 282.35</b>	DILLINGHAM RADIO <b>122.55</b>	CTAF <b>122.9</b>
---------------------------	--	-----------------------------------	----------------------



ELEV 274 **D** TDZE 274

1.0% LIP → 3300 X 75

273° to RW27

MIRL Rwy 9-27 **Ⓛ**

2900	BIJGO	Visual Segment - Obstacles.	
↑	✧	IHNIT	4 NM Holding Pattern
RW27		AVILN	IHNIT
5 NM		5 NM	093° → 3400
← 273°			
CATEGORY	A	B	C
LNAV MDA	780-1	506 (600-1)	NA
<b>C</b> CIRCLING	780-1	506 (600-1)	NA

AK, 31 OCT 2024 to 26 DEC 2024

AK, 31 OCT 2024 to 26 DEC 2024