

# RNAV (GPS) RWY 21

AKIAK (AKI) (PFAK)

APP CRS <b>211°</b>	Rwy Idg <b>3200</b> TDZE <b>40</b> Apt Elev <b>40</b>
------------------------	---

RNP APCH.

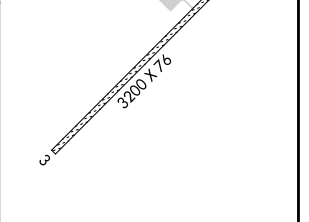
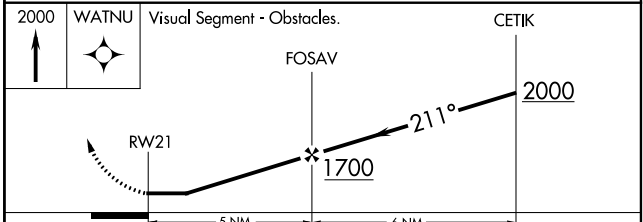
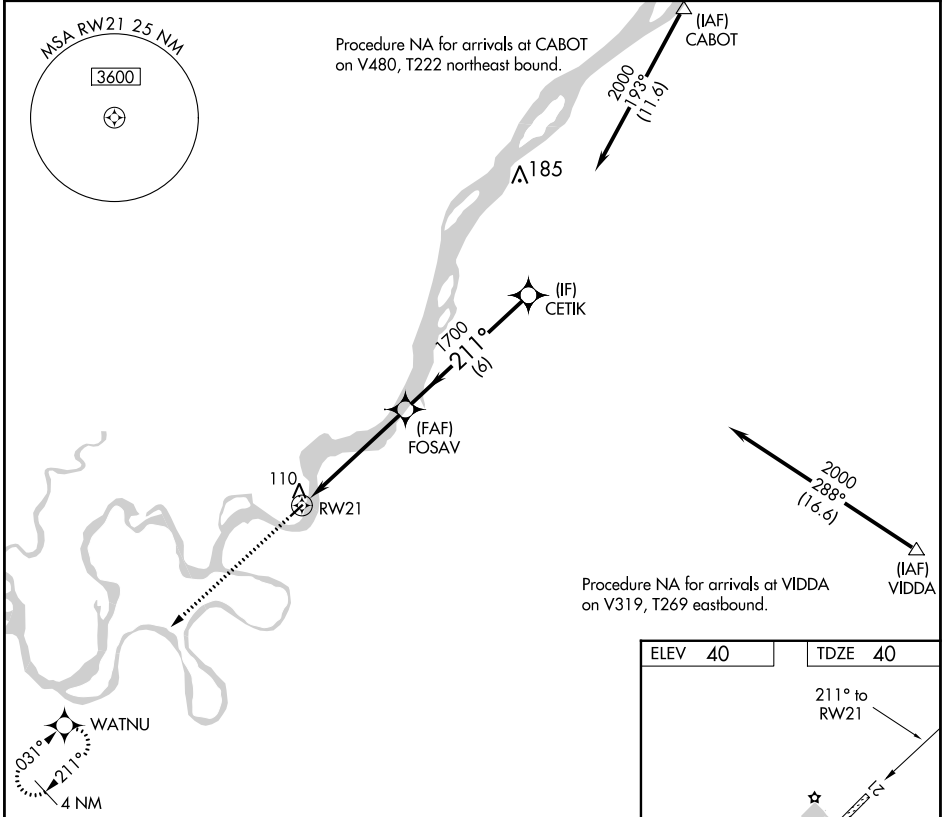
**▼** Procedure NA at night. Use Bethel altimeter setting.  
**▲** NA Rwy 21 helicopter visibility reduction below 1 SM NA.

MISSED APPROACH: Climb to 2000 direct WATNU and hold.

BET/PABE ASOS  
**135.45**

ANCHORAGE CENTER  
**125.2 372.0**

CTAF  
**122.9 0**



CATEGORY	A	B	C	D
LNVA MDA	600-1	560 (600-1)		NA
CIRCLING	600-1 560 (600-1)	620-1 580 (600-1)		NA

MIRL Rwy 3-21 0

AK, 31 OCT 2024 to 26 DEC 2024

AK, 31 OCT 2024 to 26 DEC 2024