

WAAS CH 97725 W27A	APP CRS 274°	Rwy Idg TDZE Apt Elev	3541 288 289
--	------------------------	-----------------------------	---

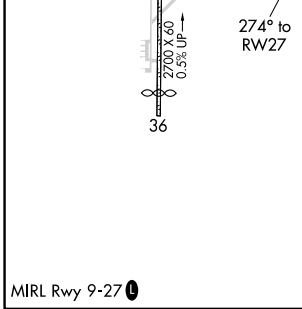
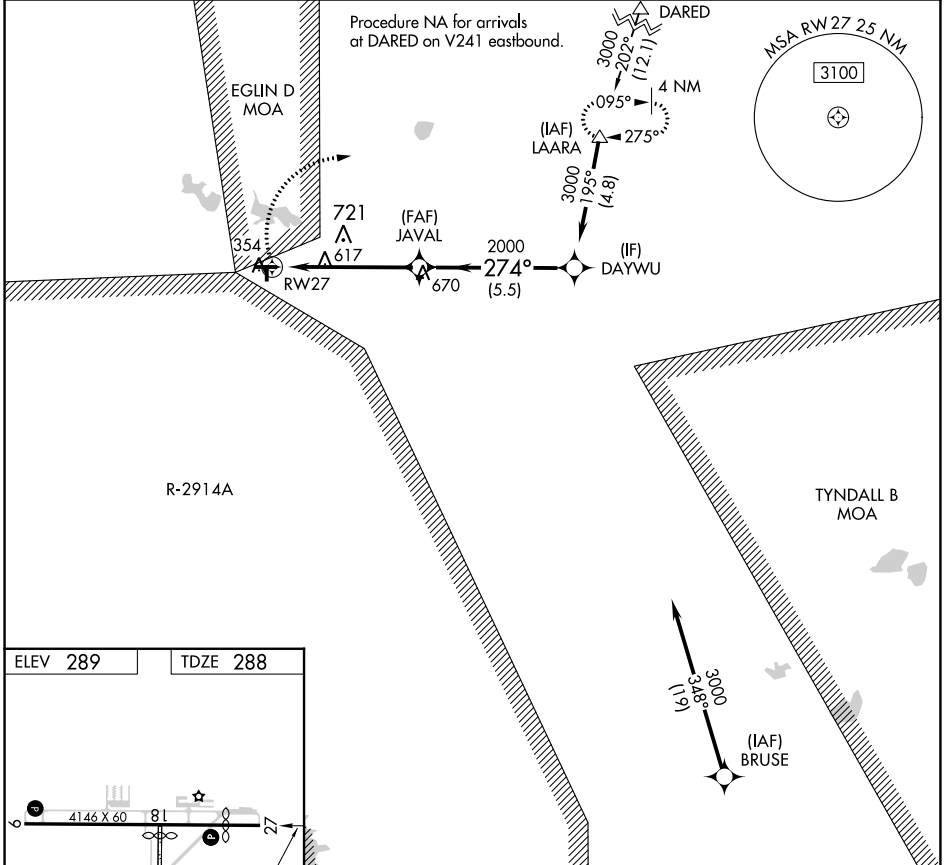
RNAV (GPS) RWY 27

DEFUNIAK SPRINGS (54J)

RNP APCH.
 ⚠ Circling NA to Rwy 18 and 36. Circling Rwy 9 NA at night.
 ⚠ Rwy 27 helicopter visibility reduction below $\frac{3}{4}$ SM NA.

MISSED APPROACH: Climbing right turn to 3000 direct LAARA and hold.

AWOS-3P 118.725	EGLIN APP CON 124.05 284.65	UNICOM 123.05 (CTAF) 0
---------------------------	---------------------------------------	----------------------------------



ELEV 289	TDZE 288			
3000 LAARA	Visual Segment - Obstacles.	DAYWU		
1.7 NM to RWY 27	JAVAL	3000		
1.7 NM	3.6 NM	5.5 NM		
2000	274°			
CATEGORY	A	B	C	D
LP MDA	880-1	592 (600-1)		NA
LNAV MDA	880-1	592 (600-1)		NA
Ⓢ CIRCLING	880-1 591 (600-1)	920-1 631 (700-1)		NA

SE-3, 31 OCT 2024 to 28 NOV 2024

SE-3, 31 OCT 2024 to 28 NOV 2024