

APP CRS	Rwy Idg	<b>4498</b>
<b>253°</b>	TDZE	<b>2241</b>
	Apt Elev	<b>2241</b>

# RNAV (GPS) RWY 25

JOHNSON COUNTY (6A4)

RNP APCH - GPS.

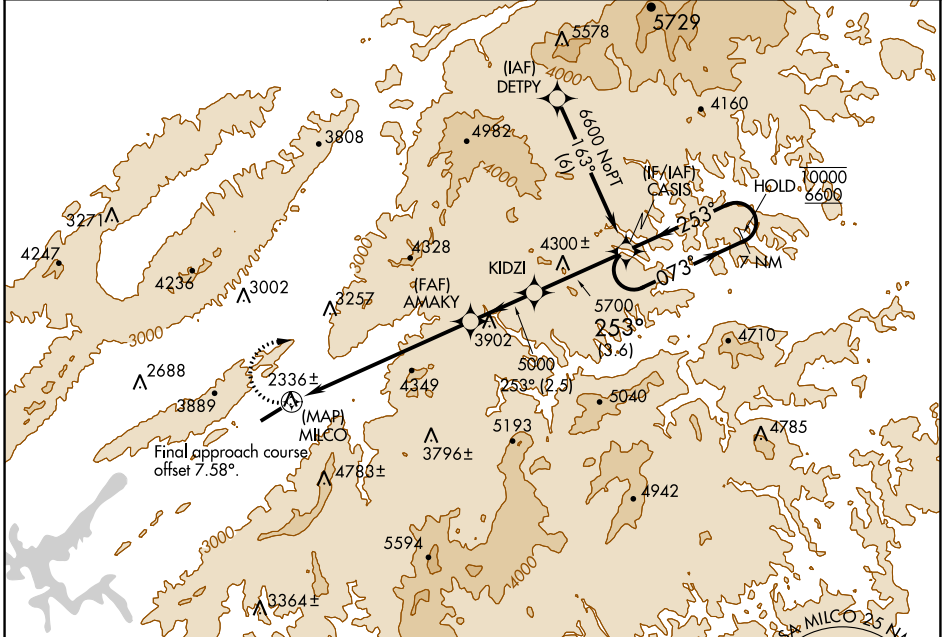
**▼** Rwy 25 helicopter visibility reduction below 1 SM NA. Circling NA for Cats C and D south of Rwy 7-25. When local altimeter setting not received, use Abingdon altimeter setting and increase all MDAs 80 feet. Procedure NA at night.

**MISSED APPROACH:**  
Climbing right turn to 6600 direct CASIS and hold.

AWOS-3  
**126.225**

TRI-CITY APP CON ★  
**134.425 349.0**

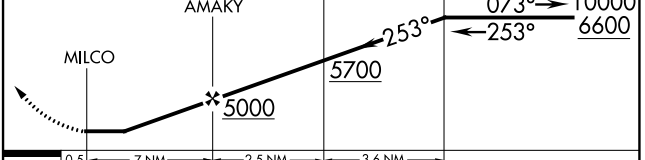
UNICOM  
**122.7 (CTAF)**



SE-1, 31 OCT 2024 to 28 NOV 2024

SE-1, 31 OCT 2024 to 28 NOV 2024

ELEV	2241	TDZE	2241
------	------	------	------



CATEGORY	A	B	C	D
LNAV MDA	4880-1¼ 2639 (2700-1¼)	4880-1½ 2639 (2700-1½)	4880-3 2639 (2700-3)	
CIRCLING	4880-1¼ 2639 (2700-1¼)	4880-1½ 2639 (2700-1½)	4880-3 2639 (2700-3)	