

APP CRS	Rwy ldg	<b>4498</b>
<b>065°</b>	TDZE	<b>2240</b>
	Apt Elev	<b>2241</b>

# RNAV (GPS) RWY 7

JOHNSON COUNTY (6A4)

RNP APCH - GPS

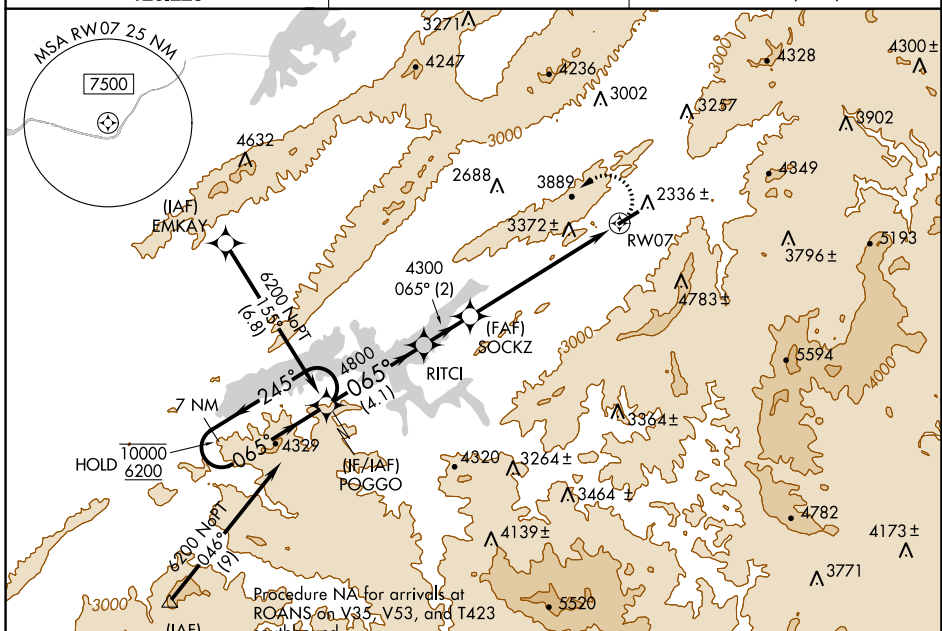
**NA** Rwy 7 helicopter visibility reduction below 1 SM NA. Circling NA for Cat C south of Rwy 7-25. When local altimeter setting not received, use Abingdon altimeter setting and increase all MDAs 80 feet. Circling NA for Cats B and C when using Abingdon altimeter setting. Procedure NA at night.

**MISSED APPROACH:**  
Climbing left turn to 6200 direct POGGO and hold.

AWOS-3  
**126.225**

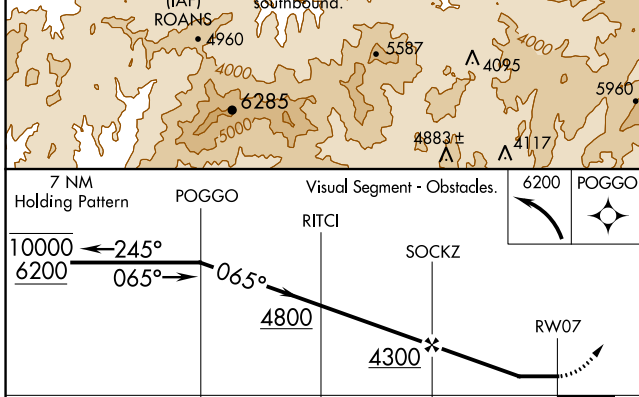
TRI-CITY APP CON ★  
**134.425 349.0**

UNICOM  
**122.7 (CTAF)**

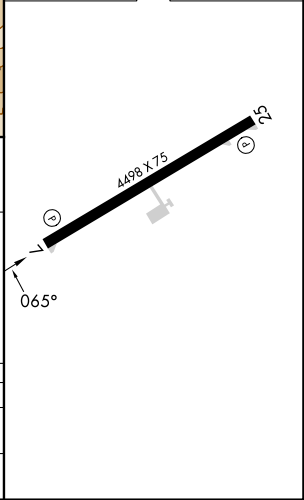


Procedure NA for arrivals at ROANS on V35, V53, and T423 southbound.

ELEV 2241	TDZE 2240
-----------	-----------



CATEGORY	A	B	C	D
RNAV MDA	4040-1¼ 1800 (1800-1¼)	4040-1½ 1800 (1800-1½)	4040-3 1800 (1800-3)	
CIRCLING	4040-1¼ 1799 (1800-1¼)	4260-1½ 2019 (2100-1½)	4260-3 2019 (2100-3)	NA



SE-1, 31 OCT 2024 to 28 NOV 2024

SE-1, 31 OCT 2024 to 28 NOV 2024