

WAAS CH 77841 W16A	APP CRS 155°	Rwy Idg 3300 TDZE 386 Apt Elev 386
---------------------------------	------------------------	---

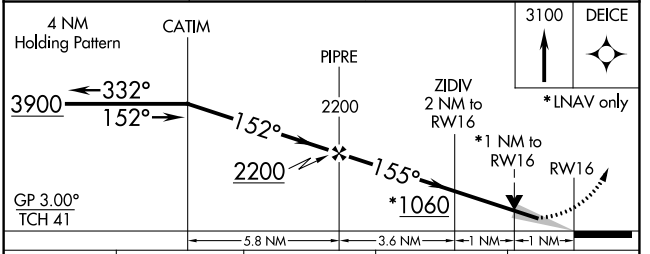
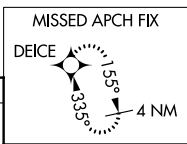
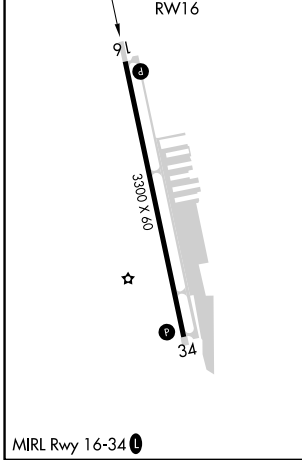
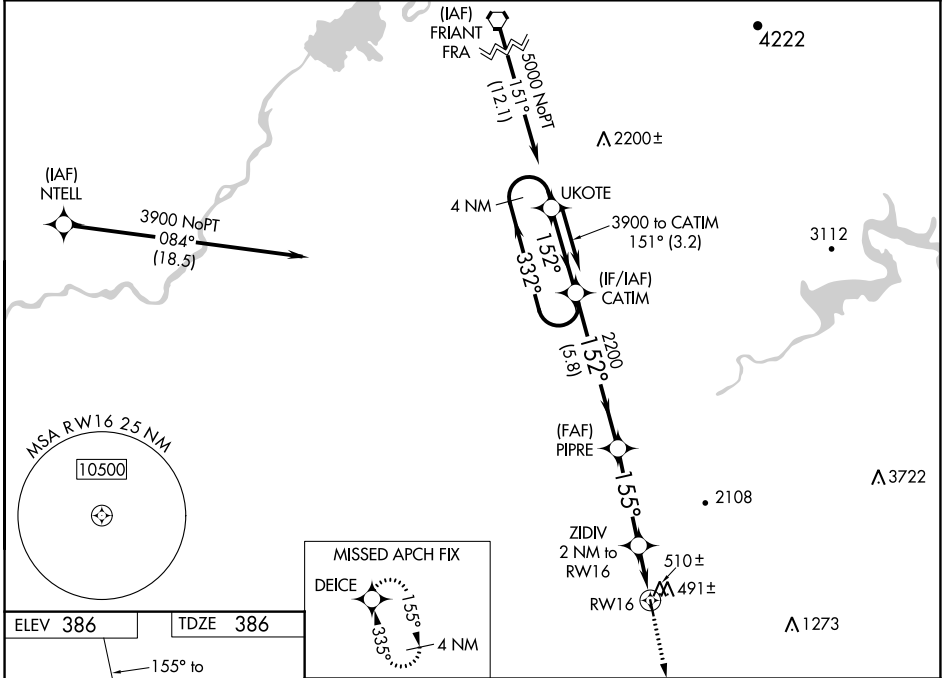
RNAV (GPS) RWY 16

REEDLEY MUNI (O32)

⚠ NA For uncompensated Baro-VNAV systems, LNAV/VNAV NA below -1.5°C (5°F) or above 54°C (130°F). Circling NA east of Rwy 16-34. Baro-VNAV and VDP NA when using Fresno Yosemite Intl altimeter setting. DME/DME RNP-0.3 NA. When local altimeter setting not received, use Fresno Yosemite Intl altimeter setting; increase all DAs 41 feet and all visibilities 1/2 SM; increase all MDAs 60 feet.

MISSED APPROACH: Climb to 3100 direct DEICE and hold, continue climb-in-hold to 3100.

AWOS-3PT 120.175	FRESNO APP CON 132.35 323.25	UNICOM 122.7 (CTAF)
----------------------------	--	-------------------------------



CATEGORY	A	B	C	D
LPV DA	636-3/4	250 (300-3/4)		NA
LNAV/VNAV DA	672-7/8	286 (300-7/8)		NA
LNAV MDA	760-1	374 (400-1)		NA
C CIRCLING	800-1 414 (500-1)	840-1 454 (500-1)		NA

SW-2, 31 OCT 2024 to 28 NOV 2024

SW-2, 31 OCT 2024 to 28 NOV 2024