

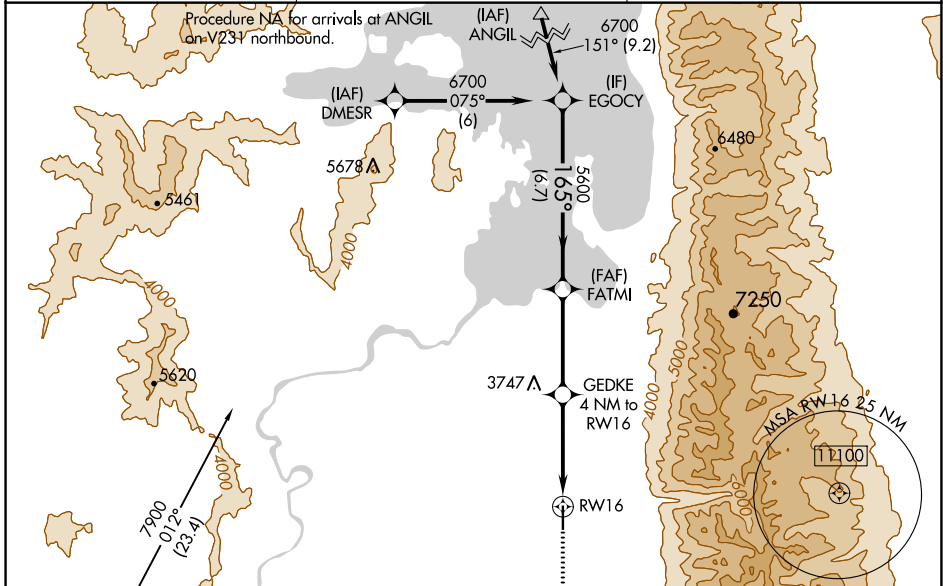
WAAS CH 45814 W16A	APP CRS 165°	Rwy Idg 4798 TDZE 3086 Apt Elev 3086
--	------------------------	---

RNAV (GPS) RWY 16

RONAN (7S)

RNP APCH.	<p>Baro-VNAV NA when using Missoula altimeter setting. For uncompensated Baro-VNAV systems, procedure NA below -21°C or above 54°C. Circling NA east of Rwy 16-34. When local altimeter setting not received, use Missoula altimeter setting: increase LPV DA to 3550 and LNAV/VNAV DA to 3639 and all visibilities ¼ SM; increase all MDAs 120 feet and LNAV Cat B and Circling Cats A and B visibility ¼ SM.</p>	<p>MISSED APPROACH: Climb to 13000 direct IBBOR and on track 255° to HANIM and hold, continue climb-in-hold to 13000.</p>
-----------	--	---

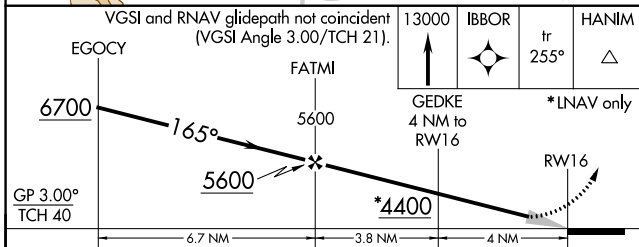
AWOS-2 119.925	SALT LAKE CITY CENTER 127.075 244.875	AUNICOM 122.8 (CTAF)
--------------------------	---	--------------------------------



Procedure NA for arrivals at ANGIL on V231 northbound.

Procedure NA for arrivals at HANIM on V120 westbound.

Procedure NA for arrivals at HANIM on V120 westbound.



CATEGORY	A	B	C	D
LPV DA	3443-1¼	357 (400-1¼)		NA
LNAV/VNAV DA	3532-1¾	446 (500-1¾)		NA
LNAV MDA	3800-1	714 (800-1)		NA
CIRCLING	3800-1	714 (800-1)		NA

ELEV 3086	TDZE 3086
← 165°	
91	
4798 X 7.5	
34	

MIRL Rwy 16-34

NW-1, 31 OCT 2024 to 28 NOV 2024

NW-1, 31 OCT 2024 to 28 NOV 2024