

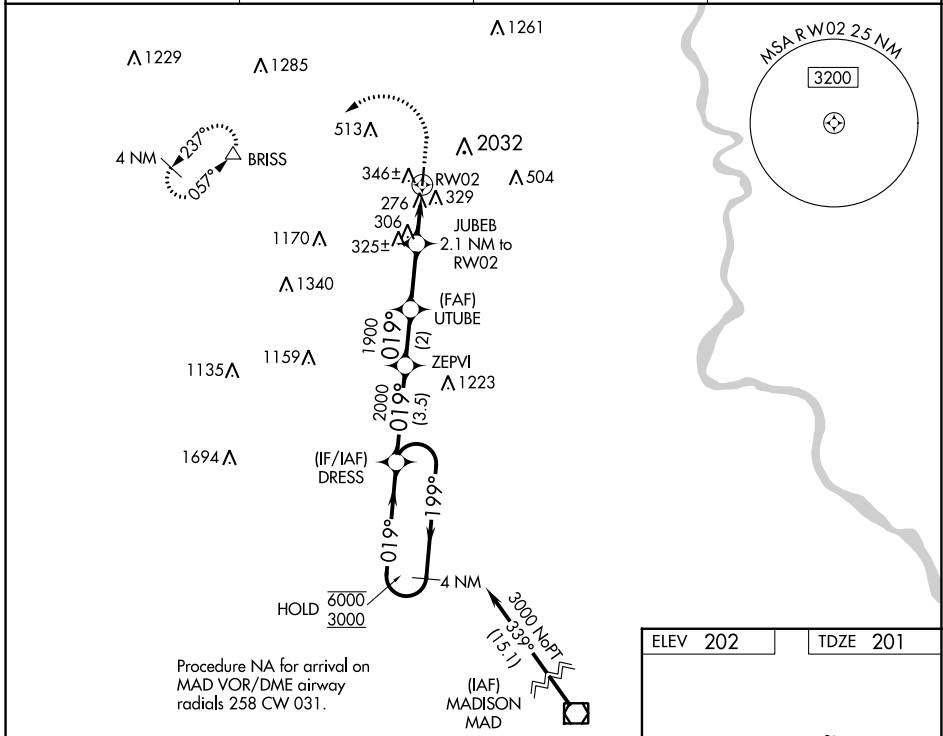
WAAS CH <b>65737</b> <b>W02A</b>	APP CRS <b>019°</b>	Rwy Idg TDZE Apt Elev	<b>3665</b> <b>201</b> <b>202</b>
--	------------------------	-----------------------------	---

# RNAV (GPS) RWY 2

ROBERTSON FLD (4B8)

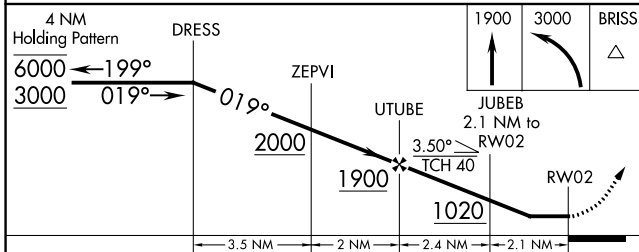
RNP APCH - GPS	<p><b>⚠</b> Circling NA east of Rwy 2-20. Circling Rwy 20 NA at night. Rwy 2 helicopter visibility reduction below 1 SM NA. When local altimeter setting not received, use Meriden altimeter setting.</p>	<p>MISSED APPROACH: Climb to 1900 then climbing left turn to 3000 direct BRISS and hold.</p>
----------------	---	--

AWOS-3PT <b>119.175</b>	BRADLEY APP CON <b>123.95 290.55</b>	CLNC DEL <b>134.5</b>	UNICOM <b>122.8 (CTAF)</b>
----------------------------	---	--------------------------	-------------------------------

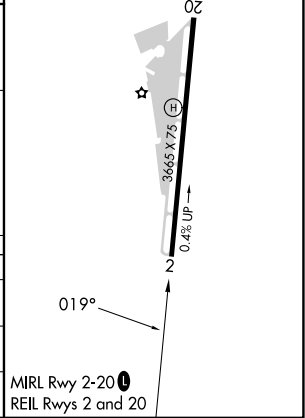


NE-1, 31 OCT 2024 to 28 NOV 2024

NE-1, 31 OCT 2024 to 28 NOV 2024



ELEV 202	TDZE 201
----------	----------



CATEGORY	A	B	C	D
LP MDA	580-1 379 (400-1)			NA
LNAV MDA	660-1	459 (500-1)	660-1 $\frac{3}{8}$ 459 (500- $\frac{1}{8}$ )	NA
<b>C</b> CIRCLING	860-1	658 (700-1)	1020-2 $\frac{1}{2}$ 818 (900-2 $\frac{1}{2}$ )	NA