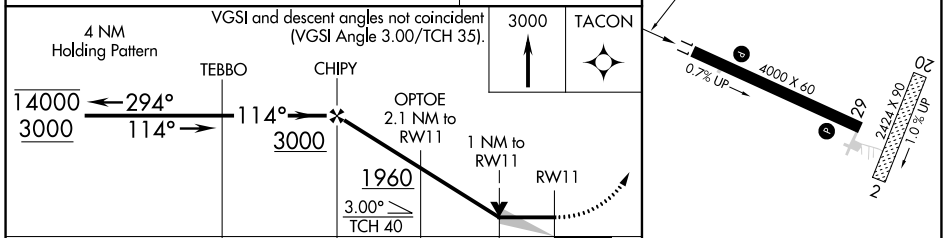
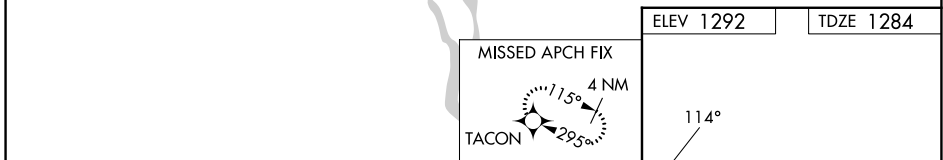
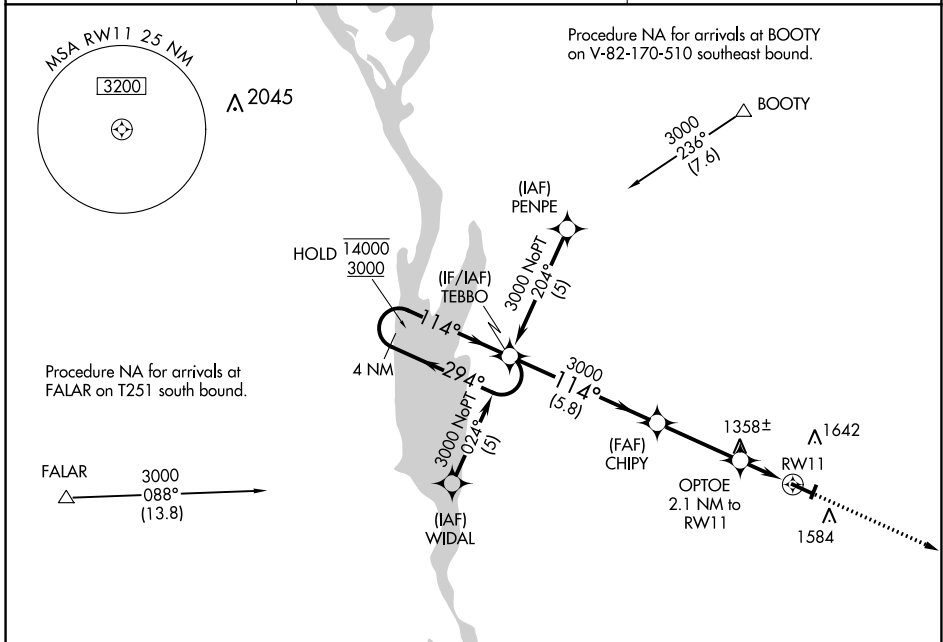


APP CRS	Rwy Idg	<b>4000</b>
<b>114°</b>	TDZE	<b>1284</b>
	Apt Elev	<b>1292</b>

# RNAV (GPS) RWY 11

VIROQUA MUNI (Y51)

RNP APCH.		MISSED APPROACH: Climb to 3000 direct TACON and hold.
	Circling NA to Rwy 2 and 20.	
AWOS-3P <b>118.975</b>	MINNEAPOLIS CENTER <b>128.6 363.0</b>	CTAF <b>122.9</b>



CATEGORY	A	B	C	D
LNVA MDA	1620-1	336 (400-1)	NA	
CIRCLING	1900-1 608 (700-1)	1960-1 668 (700-1)	NA	

ELEV 1292	TDZE 1284
-----------	-----------

REIL Rwy 11 and 29

MIRL Rwy 11-29

EC-3, 31 OCT 2024 to 28 NOV 2024

EC-3, 31 OCT 2024 to 28 NOV 2024