

| | | |
|------------------------|-----------------------------|---|
| APP CRS 348° | Rwy Idg TDZE Apt Elev | 6004 360 364 |
|------------------------|-----------------------------|---|

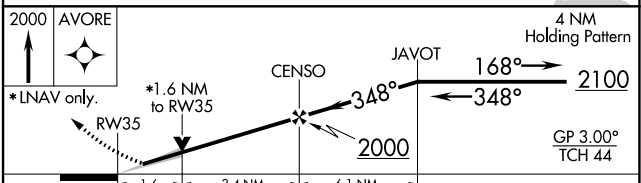
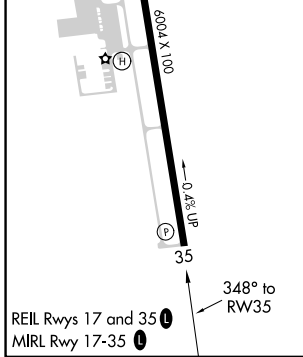
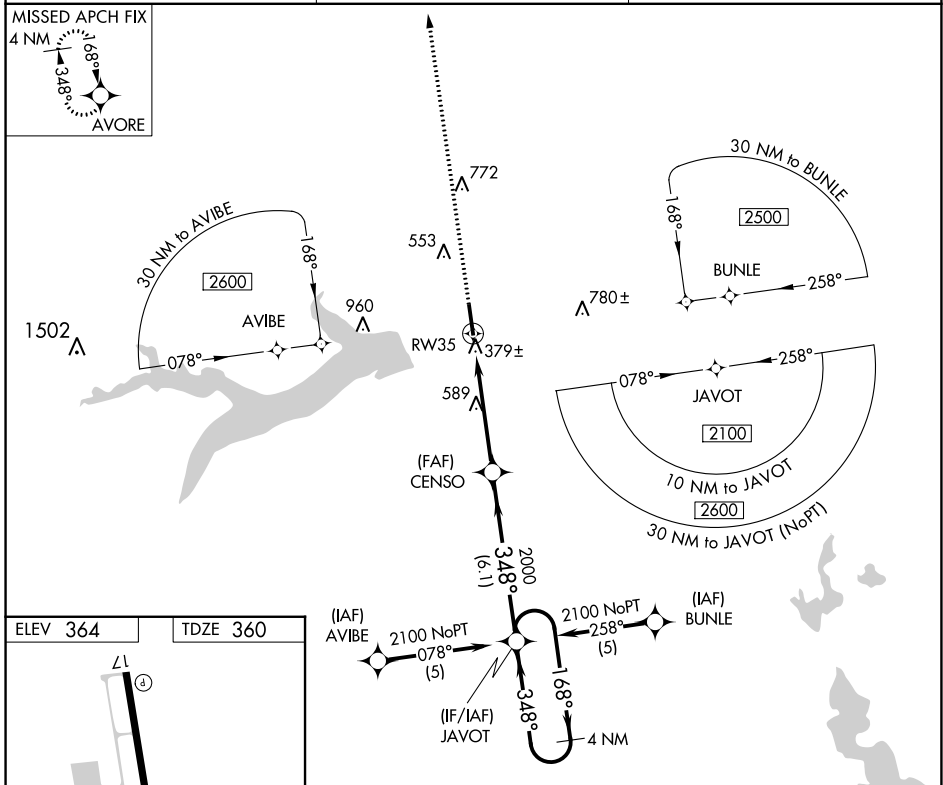
RNAV (GPS) RWY 35

MOUNT PLEASANT RGNL (OSA)

▼ For uncompensated Baro-VNAV systems, LNAV/VNAV NA below -15°C (5°F) or above 48°C (118°F). DME/DME RNP-0.3 NA. When local altimeter setting not received, use Paris altimeter setting and increase all DA/MDA 120 feet, increase LNAV/VNAV visibilities ½ mile all Cats, LNAV visibilities ¼ mile all Cats and circling visibilities ¼ mile all Cats. VDP and Baro-VNAV NA when using Paris altimeter setting.

▲ MISSED APPROACH: Climb to 2000 direct AVORE and hold.

| | | |
|--------------------------|--|---------------------------------|
| AWOS-3 119.775 | FORT WORTH CENTER 132.025 360.75 | UNICOM 122.7 (CTAF) 0 |
|--------------------------|--|---------------------------------|



| CATEGORY | A | B | C | D |
|--------------|---------------------|-------------|------------------------|-------------------------|
| LNAV/VNAV DA | 700-1¼ 340 (400-1¼) | | | |
| LNAV MDA | 900-1 | 540 (600-1) | 900-1½ 540 (600-1½) | 900-1¾ 540 (600-1¾) |
| CIRCLING | 900-1 | 536 (600-1) | 1040-2 676 (700-2) | 1040-2¼ 676 (700-2¼) |

SC-2, 31 OCT 2024 to 28 NOV 2024

SC-2, 31 OCT 2024 to 28 NOV 2024