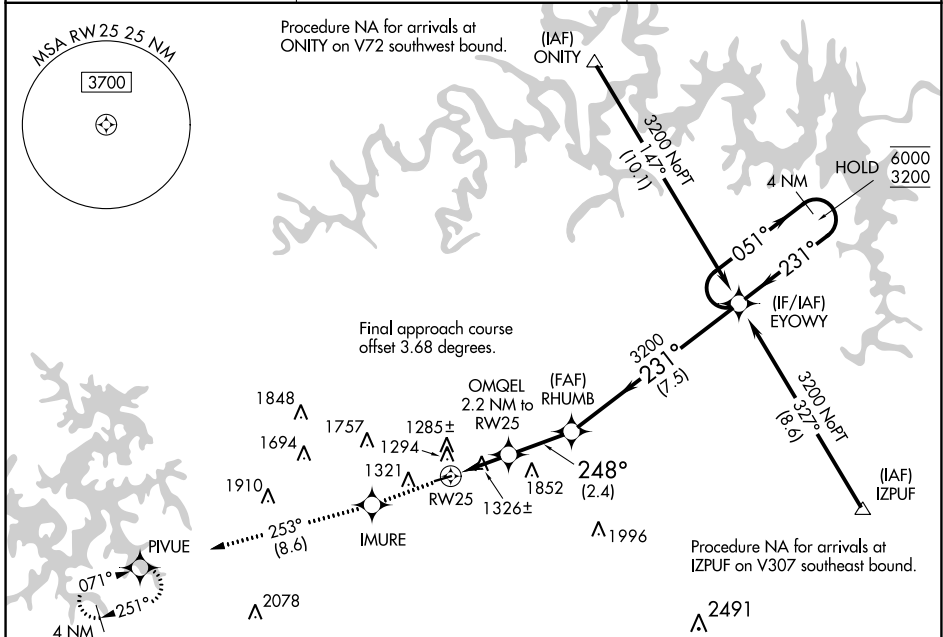


WAAS CH <b>86442</b> <b>W25A</b>	APP CRS <b>248°</b>	Rwy Idg TDZE <b>1206</b> Apt Elev <b>1206</b>	<b>3555</b>
--	------------------------	---	-------------

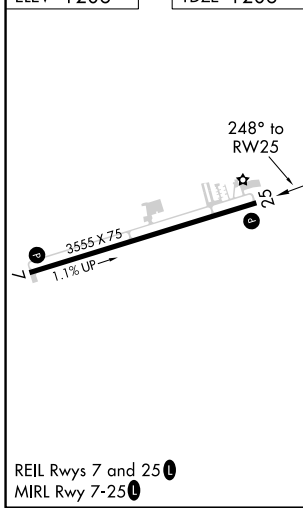
# RNAV (GPS) RWY 25

CARROLL COUNTY (4M1)

RNP APCH-GPS.		MISSED APPROACH: Climb to 3300 direct IMURE and on track 253° to PIVUE and hold.
<p><b>▼</b> Rwy 25 helicopter visibility reduction below 3/4 SM NA. Use Branson altimeter setting; when not received, use Rogers altimeter setting and increase all MDA 20 feet. Circling Rwy 7 NA at night.</p> <p><b>▲</b> NA</p>		
BBG AWOS-3 <b>124.625</b>	RAZORBACK APPROACH* <b>126.6 305.2</b>	CTAF <b>122.90</b>



ELEV 1206	TDZE 1206
-----------	-----------



3300	IMURE	Ir 253°	PIVUE	VGSI and descent angles not coincident (VGSI Angle 3.00/TCH 22).	4 NM Holding Pattern
				RHUMB	EYOWY
				2180	3200
				231°	051°
				← 231°	6000 3200
				← 2.2 NM → 2.4 NM → 7.5 NM	

CATEGORY	A	B	C	D
LP MDA	1660-1	454 (500-1)		NA
LNAV MDA	1660-1	454 (500-1)		NA
<b>C</b> CIRCLING	1700-1 494 (500-1)	1980-1 774 (800-1)		NA

SC-1, 31 OCT 2024 to 28 NOV 2024

SC-1, 31 OCT 2024 to 28 NOV 2024