

WAAS CH <b>40242</b> <b>W07A</b>	APP CRS <b>071°</b>	Rwy ldg TDZE <b>1203</b> Apt Elev <b>1206</b>
--	------------------------	---

# RNAV (GPS) RWY 7

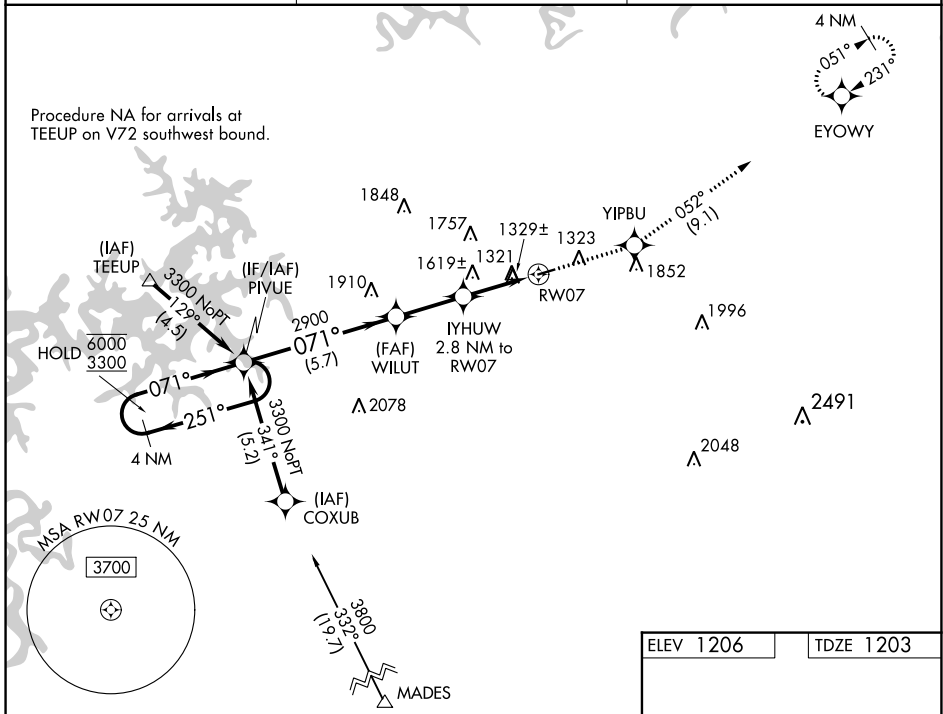
CARROLL COUNTY (4M1)

RNP APCH-GPS.

▼ Rwy 7 helicopter visibility reduction below 1 SM NA. Use Branson altimeter setting; when not received, use Rogers altimeter setting and increase all MDA 20 feet. Rwy 7 Straight-in and Circling minimums NA at night.

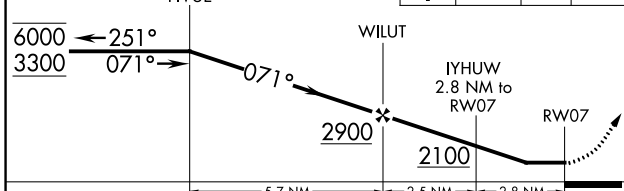
MISSED APPROACH: Climb to 3300 direct YIPBU and on track 052° to EYOWY and hold.

BGG AWOS-3 <b>124.625</b>	RAZORBACK APPROACH ★ <b>126.6 305.2</b>	CTAF <b>122.9</b>
------------------------------	--	----------------------



Visual Segment - Obstacles.

3300	YIPBU	tr 052°	EYOWY
------	-------	---------	-------



ELEV 1206	TDZE 1203
-----------	-----------

3555 X 75

1.1% UP

071° to RW07

REIL Rwy 7 and 25

MIRL Rwy 7-25

CATEGORY	A	B	C	D
LP MDA	1760-1	557 (600-1)		NA
LNNAV MDA	1940-1	737 (800-1)		NA
<b>C</b> CIRCLING	1940-1 734 (800-1)	1980-1 774 (800-1)		NA

SC-1, 31 OCT 2024 to 28 NOV 2024

SC-1, 31 OCT 2024 to 28 NOV 2024