

WAAS CH <b>69637</b> <b>W01A</b>	APP CRS <b>012°</b>	Rwy Idg <b>3202</b> TDZE <b>235</b> Apt Elev <b>236</b>
--	------------------------	---

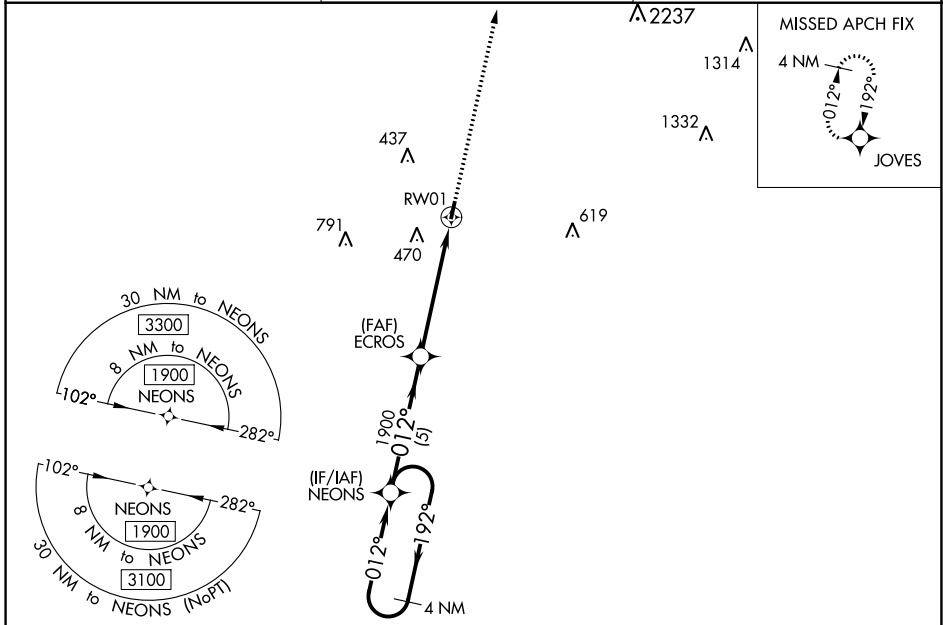
# RNAV (GPS) RWY 1

SHERIDAN-GRANT COUNTY RGNL (9M8)

**⚠ NA** DME/DME RNP-0.3 NA. Helicopter visibility reduction below 1 SM NA.  
**⚠ NA** Night Landing: Rwy 1 NA. Use Pine Bluff altimeter setting, when not received, use Little Rock altimeter setting and increase all MDA 20 feet: increase LP and LNAV Cat C visibility 1/8 mile, and Circling Cat C visibility 1/4 mile.

MISSED APPROACH: Climb to 2100 direct JOVES and hold.

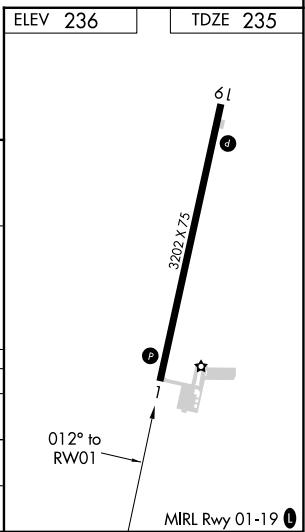
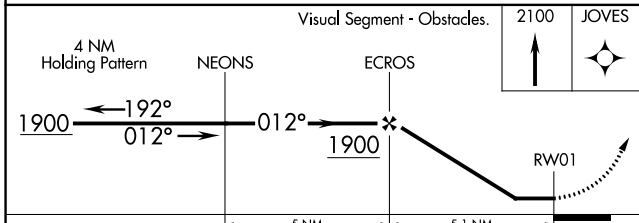
PBF ASOS <b>120.775</b>	LITTLE ROCK APP CON <b>135.4 353.6</b>	UNICOM <b>122.8 (CTAF) 0</b>
----------------------------	---	---------------------------------



SC-1, 31 OCT 2024 to 28 NOV 2024

SC-1, 31 OCT 2024 to 28 NOV 2024

ELEV 236	TDZE 235
----------	----------



CATEGORY	A		B		C		D
	LP MDA	760-1	525 (600-1)	760-1½	525 (600-1½)	800-1⅝	565 (600-1⅝)
LNAV MDA	800-1	565 (600-1)	800-1⅝	565 (600-1⅝)	960-2	724 (800-2)	NA
<b>C</b> CIRCLING	800-1	840-1	840-1	604 (700-1)	960-2	724 (800-2)	NA