

APP CRS <b>017°</b>	Rwy Idg <b>4500</b>
	TDZE <b>2087</b>
	Apt Elev <b>2092</b>

# RNAV (GPS) RWY 2

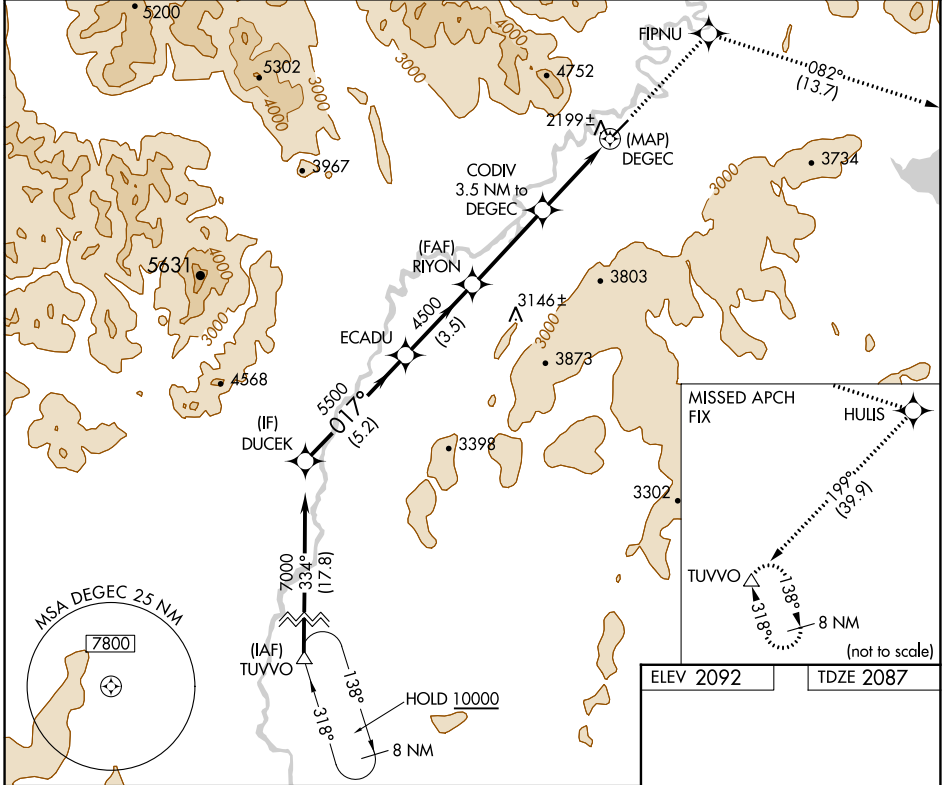
## ARCTIC VILLAGE (ARC)(PARC)

**33** -37°C

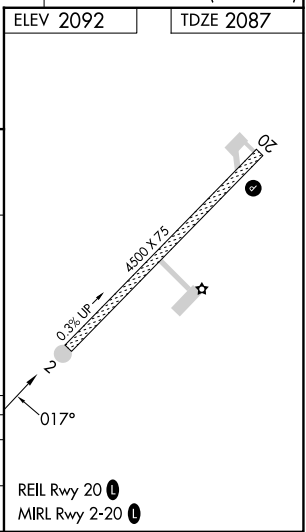
DME/DME RNP-0.3 NA.  
If local altimeter setting not received, procedure NA.

MISSED APPROACH: Climb to 10000 direct FIPNU and via 082° track to HULIS and right turn via 199° track to TUVVO and hold.

AWOS-3P <b>135.75</b>	ANCHORAGE CENTER <b>135.0 225.4</b>	FAIRBANKS RADIO <b>122.05</b>	CTAF <b>122.9</b>
--------------------------	--	----------------------------------	----------------------



DUCEK	10000	FIPNU	tr 082°	HULIS	tr 199°	TUVVO
ECADU		RIYON		CODIV 3.5 NM to DEGECK		
7000	5500	4500	3300	DEGECK		
5.2 NM		3.5 NM		3.7 NM		1.3
CATEGORY	A	B	C	D		
RNAV MDA	2880-1 793 (800-1)	2880-1¼ 793 (800-1¼)		NA		
CIRCLING	2880-1 788 (800-1)	2900-1¼ 808 (900-1¼)		NA		



AK, 31 OCT 2024 to 26 DEC 2024

AK, 31 OCT 2024 to 26 DEC 2024

REIL Rwy 20 **1**  
MIRL Rwy 2-20 **1**