

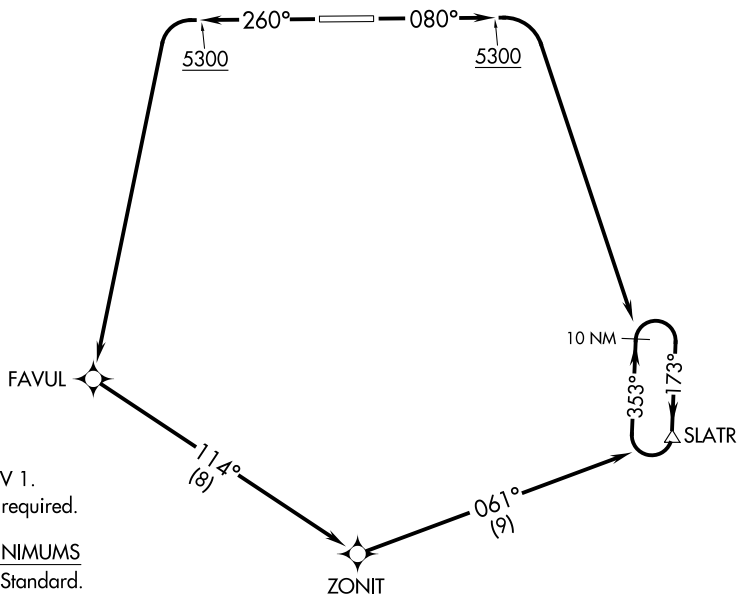
(SLATR1.SLATR) 23054

# SLATR ONE DEPARTURE (OBSTACLE) (RNAV)

AL-10272 (FAA)

PHIFER AIRFIELD (E·A·N)  
WHEATLAND, WYOMING

DENVER CENTER  
135.6 363.025



NOTE: RNAV 1.  
NOTE: GPS required.

TAKEOFF MINIMUMS  
Rwys 8, 26: Standard.

### TAKEOFF OBSTACLE NOTES

- Rwy 26: Vehicles on road 7' from DER, 153' right of centerline, 4781' MSL.  
Buildings, pole, fence, vertical point beginning 18' from DER, 186' left of centerline, up to 17' AGL/4796' MSL.  
Vehicles on road 60' from DER, 150' right of centerline, 4786' MSL.  
Trees, vehicles on road beginning 61' from DER, 151' right of centerline, up to 4814 MSL.  
Pole, fence, terrain, tank, vehicles on road, tree beginning 149' from DER, 137' left of centerline, up to 25' AGL/4804' MSL.  
Trees, poles beginning 365' from DER, 7' right of centerline, up to 4823' MSL.  
Poles beginning 562' from DER, 353' left of centerline, up to 38' AGL/4817' MSL.  
Trees, poles, buildings, transmission lines beginning 779' from DER, 38' left of centerline, up to 4825' MSL.  
Trees, transmission lines, poles beginning 1121' from DER, 18' left of centerline, up to 4838' MSL.  
Trees, pole, transmission line beginning 1192' from DER, 26' right of centerline, up to 4827' MSL.  
Trees beginning 1328' from DER, 51' right of centerline, up to 4834' MSL.  
Trees beginning 1552' from DER, 55' right of centerline, up to 4837' MSL.  
Tree 1627' from DER, 73' left of centerline, 4842' MSL.

NOTE: Chart not to scale.

### DEPARTURE ROUTE DESCRIPTION

TAKEOFF RUNWAY 8: Climb on heading 080° to 5300, then climbing right turn to 9500 direct SLATR, thence . . . .

TAKEOFF RUNWAY 26: Climb on heading 260° to 5300, then climbing left turn direct FAVUL, then on depicted route to SLATR, thence . . . .

. . . . continue climb in SLATR holding pattern to MEA for assigned route of flight.

# SLATR ONE DEPARTURE (OBSTACLE) (RNAV)

(SLATR1.SLATR) 30JAN20

WHEATLAND, WYOMING  
PHIFER AIRFIELD (E·A·N)

NW-1, 31 OCT 2024 to 28 NOV 2024

NW-1, 31 OCT 2024 to 28 NOV 2024