

WAAS CH 56529 W07A	APP CRS 067°	Rwy Idg TDZE 3490 Apt Elev 3490	5099
--	------------------------	---	-------------

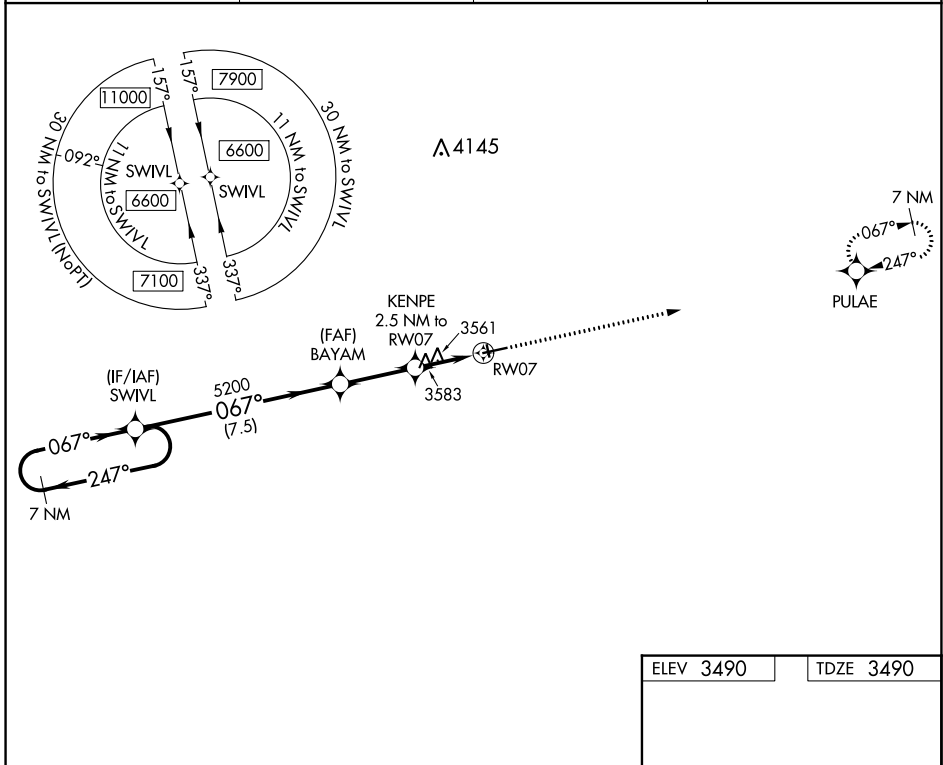
RNAV (GPS) RWY 7

ROUNDUP (RPX)

▽ Use Billings altimeter setting, when not received, procedure NA.
△ NA When VGSI inop, Straight-in/Circling Rwy 7 procedure NA at night.
 DME/DME RNP-0.3 NA. Visibility reduction by helicopters NA.

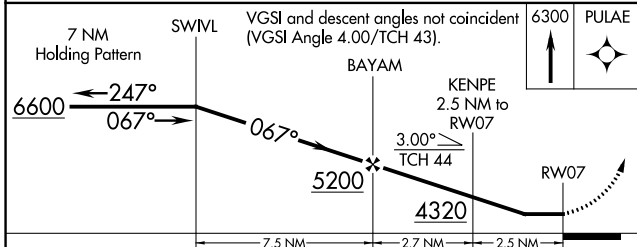
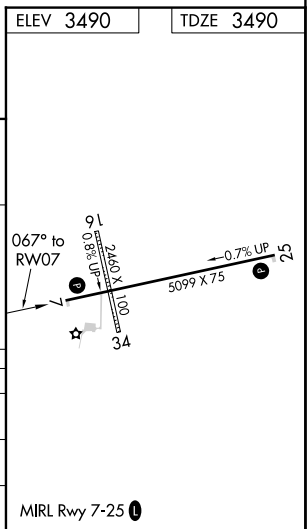
MISSED APPROACH: Climb to 6300 direct PULAE and hold.

BIL ASOS 126.3	SALT LAKE CENTER 126.85 305.2	UNICOM 122.8 (CTAF)	122.7 0
--------------------------	---	-------------------------------	----------------



NW-1, 31 OCT 2024 to 28 NOV 2024

NW-1, 31 OCT 2024 to 28 NOV 2024



CATEGORY	A	B	C	D
LP MDA	3940-1 450 (500-1)		3940-1 $\frac{3}{8}$ 450 (500-1 $\frac{3}{8}$)	
LNAV MDA	3960-1 470 (500-1)		3960-1 $\frac{3}{8}$ 470 (500-1 $\frac{3}{8}$)	
CIRCLING	4000-1 510 (600-1)		4140-1 $\frac{3}{4}$ 650 (700-1 $\frac{3}{4}$)	4340-2 $\frac{3}{4}$ 850 (900-2 $\frac{3}{4}$)