

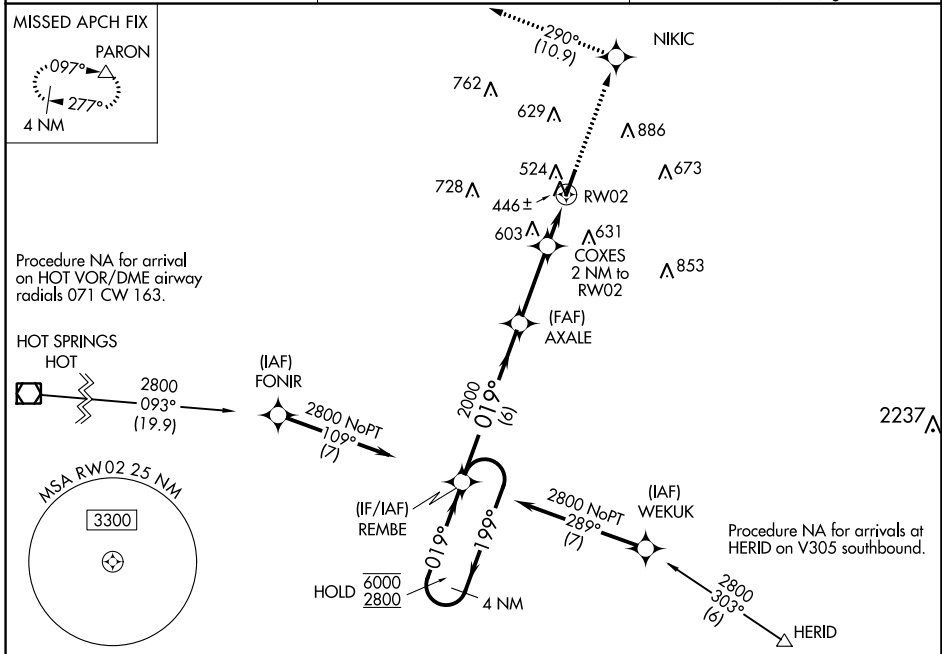
WAAS CH <b>58209</b> <b>W02A</b>	APP CRS <b>019°</b>	Rwy Idg TDZE <b>389</b> Apt Elev <b>389</b>	<b>5002</b> <b>389</b> <b>389</b>
--	------------------------	---	---

# RNAV (GPS) RWY 2

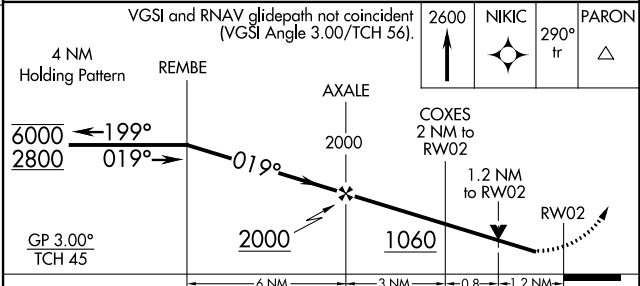
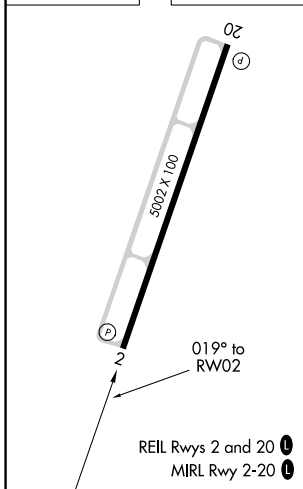
SALINE COUNTY RGNL (SUZ)

RNP APCH - GPS.	MISSED APPROACH: Climb to 2600 direct NIKIC and track 290° to PARON and hold.
<p>▼ Rwy 2 helicopter visibility reduction below 3/4 SM NA.</p> <p>▲ For uncompensated Baro-VNAV systems, LNAV/VNAV NA below -15°C or above 54°C.</p>	

AWOS-3 <b>132.125</b>	LITTLE ROCK APP CON <b>119.5 306.2</b>	UNICOM <b>122.8 (CTAF) 0</b>
--------------------------	---	---------------------------------



ELEV <b>389</b>	TDZE <b>389</b>
-----------------	-----------------



CATEGORY	A	B	C	D
LPV DA		639-3/4	250 (300-3/4)	
LNAV/VNAV DA		670-7/8	281 (300-7/8)	
LNAV MDA	820-1	431 (500-1)	820-1 1/4	431 (500-1 1/4)
<b>CIRCLING</b>	940-1 551 (600-1)	1080-1 691 (700-1)	1200-2 1/2 811 (900-2 1/2)	1200-2 3/4 811 (900-2 3/4)

SC-1, 31 OCT 2024 to 28 NOV 2024

SC-1, 31 OCT 2024 to 28 NOV 2024